

Hereford BRED Sale Group

Cow ID	Reg. No.	AI/Date	AI Sire (FN 1)	PE Sire (FN 2)
Z426	43369948	12/24/2018	4386	B311/1740
Z431	43369951	-	-	B311/1740
1553	43553635	12/18/2018	4386	B311/1740
15101	43553117	-	-	597B/E018
1640	43637492	12/19/2018	B311	597B/E018
1790	43741295	12/20/2018	976	597B/E018
17136	43750743	12/19/2018	713	597B/E018
18056	43855476	-	-	E018/18051/17203
18044	43855481	-	-	E018/18051/17203
18084	43855692	-	-	E018/18051/17203

AI - Footnote 1

JDH Victor 719T 33Z ET / 43294080
 KCF Bennett Revolution X51 / 43081556
 KCF Bennett Devout B716 ET / 43595083
 6D Nevada 713 / 43862246
 Hyalite on Target 936 / 42986803
 R Landmark 4386 / 43711605
 KCF Bennett Reuben B311 ET / 43552684
 KCF Bennett Encore Z311 ET / 43387256

PE - Footnote 2

Whitehawk 225 Beefmaker 597B / 43460362
 EFBeef A250 Tested E018 / 43777074
 KCF Bennett Reuben B311 ET / 43552684
 JW X651 Tested 1740 / 43735530
 6D Nevada 713 / 43862246
 JW B716 Devout 18051 / 43859659
 JW A248 Proficient 17203 / 43958949

Date

1/2/19 - 5/3/19
 5/3/19 - 6/1/19
 12/27/18 - 1/7/19
 1/7/19 - 4/1/19
 1/8/19 - 4/11/19
 1/22/19 - 5/3/19
 1/5/19 - 5/3/19

Hereford Bred Sale Group

AMERICAN HEREFORD ASSOCIATION

Box 014059, Kansas City, Missouri 64101

PERFORMANCE PEDIGREE

NAME: [KCF MISS HARLAND Z426 {DLF,HYF,IEF}](#) (43369948) **SEX:** Cow **HPS:** Horned

CALVED: Sep. 21, 2012 **TATTOO RE:** Z426 **LE:** **REGISTRY NUMBER:** 43369948

BREEDER: [KNOLL CREST FARM, RED HOUSE VA](#) **OWNER:** [JOE A WAGGONER LLC, CARTHAGE MS](#)

EPD VALUES	CE EPD	BW EPD	WW EPD	YW EPD	DMI EPD	SC EPD	SCF EPD	MM EPD	MG EPD	MCE EPD	MCW EPD	UDDR EPD	TEAT EPD	CW EPD	FAT EPD	REA EPD	MARB EPD	BMI EPD	BII EPD	CHB EPD
ANIMAL	+5.9 (.36)	+2.9 (.52)	+50 (.45)	+84 (.46)	+0.1 (.15)	+1.3 (.36)	+17.6 (.21)	+29 (.28)	+54 (-)	+2.3 (.23)	+64 (.38)	+1.00 (.51)	+0.90 (.52)	+53 (.26)	+0.049 (.29)	-0.08 (.25)	-0.01 (.27)	+\$ 333 (-)	+\$ 396 (-)	+\$ 81 (-)
SIRE	+10.0 (.80)	+1.9 (.94)	+54 (.92)	+92 (.91)	0.0 (.41)	+1.6 (.84)	+16.2 (.77)	+28 (.88)	+55 (-)	+5.2 (.80)	+83 (.83)	+1.10 (.89)	+1.00 (.89)	+62 (.54)	+0.079 (.60)	+0.09 (.54)	+0.14 (.56)	+\$ 339 (-)	+\$ 414 (-)	+\$ 98 (-)
DAM	+1.0 (.34)	+2.2 (.46)	+44 (.38)	+71 (.41)	-0.2 (.13)	+1.1 (.29)	+18.0 (.20)	+27 (.32)	+49 (-)	+0.4 (.23)	+58 (.41)	+0.90 (.40)	+1.00 (.40)	+46 (.20)	+0.049 (.26)	-0.01 (.20)	0.00 (.22)	+\$ 337 (-)	+\$ 395 (-)	+\$ 73 (-)

[KB L1 DOMINO 519 \(19498823\)](#)

[HH ADVANCE 9005 \(DLF,IEF\) \(41114485\)](#)

[HH MS ADVANCE 40540 \(DOD\) \(19432382\)](#)

 Sire: [CJH HARLAND 408 \(SOD,DLF,HYF,IEF,MSUDF\) \(42536808\)](#)

[L1 DOMINO 920501 \(SOD\) \(19314369\)](#)

[CJH L1 DOMINETTE 0064 \(DLF,HYF,IEF\) \(42118907\)](#)

[CJH L1 DOMINETTE 759 \(DLF,HYF,IEF\) \(40051103\)](#)
 Animal: [KCF MISS HARLAND Z426 {DLF,HYF,IEF} \(43369948\)](#)

[FELTONS DOMINO 774 \(SOD,DLF,HYF,IEF\) \(P23864055\)](#)

[KCF BENNETT 774 R413 \(SOD,DLF,HYF,IEF\) \(P42651310\)](#)

[KCF MISS H142 L332 \(DOD\) \(P42219875\)](#)

 Dam: [KCF MISS R413 U568 \(P42955476\)](#)

[CL 1 DOMINO 9126J 1ET \(SOD,DLF,IEF\) \(41113279\)](#)

[KCF MISS 9126J R327 \(P42651329\)](#)

[KCF MISS H119 L386 \(P42219870\)](#)

		INDIVIDUAL PERFORMANCE	PROGENY NUMBER	PROGENY AVERAGES
		Animal	Birth Wt.	101.0 %
	Weaning Wt.	104.0 %	3	103.0 %
	Yearling Wt.	105.0 %		
	Yearling Ht.			
	Yr. Sc. Cir.			
	Fat Depth	99.0 %		
	Ribeye Area	92.0 %		
	IMF	62.0 %		
SIRE Daughters: 1099 Calves: 3765 Ratio: 100.4	Birth Wt.	86.0 %	2920	99.6 %
	Weaning Wt.	107.0 %	2774	100.9 %
	Yearling Wt.	105.0 %	1808	101.1 %
	Yearling Ht.		673	6.3 Frame
	Yr. Sc. Cir.		614	36.7 Cm.
	Fat Depth	187.0 %	1371	108.3 %
	Ribeye Area	107.0 %	1371	100.6 %
	IMF	110.0 %	1373	105.6 %
DAM	Birth Wt.	96.0 %	6	103.8 %
	Weaning Wt.	92.0 %	5	105.8 %
	Yearling Wt.	95.0 %	5	105.4 %
	Yearling Ht.			
	Yr. Sc. Cir.			
	Fat Depth	119.0 %	3	132.0 %
	Ribeye Area	94.0 %	3	95.7 %
	IMF	94.0 %	3	81.7 %



PERFORMANCE AS OF: 09/23/19

SECRETARY, AMERICAN HEREFORD ASSOCIATION

AMERICAN HEREFORD ASSOCIATION

Box 014059, Kansas City, Missouri 64101

PERFORMANCE PEDIGREE

NAME: KCF MISS PROFICIENT Z431 {DLF,HYF,IEF} **SEX:** Cow **HPS:** Polled
(P43369951)

CALVED: Sep. 21, 2012 **TATTOO RE:** Z431 **LE:** **REGISTRY NUMBER:** 43369951
BREEDER: KNOLL CREST FARM, RED HOUSE VA **OWNER:** JOE A WAGGONER LLC, CARTHAGE MS

EPD VALUES	CE EPD	BW EPD	WW EPD	YW EPD	DMI EPD	SC EPD	SCF EPD	MM EPD	MG EPD	MCE EPD	MCW EPD	UDDR EPD	TEAT EPD	CW EPD	FAT EPD	REA EPD	MARB EPD	BMI EPD	BII EPD	CHB EPD
ANIMAL	+8.2 (.34)	+2.0 (.50)	+53 (.43)	+80 (.45)	+0.2 (.14)	+1.4 (.36)	+17.5 (.18)	+29 (.26)	+56 (-)	+5.8 (.21)	+56 (.35)	+1.30 (.48)	+1.40 (.49)	+48 (.27)	+0.049 (.29)	+0.27 (.26)	+0.27 (.28)	+\$ 349 (-)	+\$ 430 (-)	+\$ 76 (-)
SIRE	+9.1 (.70)	+0.1 (.91)	+51 (.86)	+78 (.87)	+0.1 (.57)	+1.0 (.79)	+20.3 (.60)	+31 (.78)	+57 (-)	+4.8 (.67)	+57 (.78)	+1.40 (.84)	+1.60 (.85)	+55 (.67)	+0.059 (.65)	+0.32 (.66)	+0.14 (.67)	+\$ 390 (-)	+\$ 463 (-)	+\$ 84 (-)
DAM	+0.9 (.32)	+3.4 (.36)	+54 (.31)	+83 (.33)	0.0 (.11)	+1.6 (.28)	+14.5 (.18)	+25 (.29)	+52 (-)	+1.3 (.21)	+65 (.38)	+1.10 (.31)	+1.00 (.32)	+50 (.16)	+0.039 (.19)	+0.04 (.16)	+0.24 (.17)	+\$ 305 (-)	+\$ 386 (-)	+\$ 80 (-)

BT MOHICAN TRADITION 530 {SOD} (P22967333)
BAR JZ TRADITION 434V {SOD,DLF,HYF,IEF} (P23143259)
BAR JZ BANNER LDY 693P {DOD} (P22636708)
 Sire: EFBEEF SCHU-LAR PROFICIENT N093 {SOD,DLF,HYF,IEF,MSUDF} (P42444860)
GERBER WATCHFIRE 117F {SOD} (P24029488)
GERBER 117F DIXIE 009K {DLF,HYF,IEF} (P42068219)
GERBER ROX DIXIE 106Z {P23488090}
 Animal: KCF MISS PROFICIENT Z431 {DLF,HYF,IEF} (P43369951)
FELTONS DOMINO 774 {SOD,DLF,HYF,IEF} (P23864055)
KCF BENNETT 774 R413 {SOD,DLF,HYF,IEF} (P42651310)
KCF MISS H142 I.332 {DOD} (P42219875)
 Dam: KCF MISS R413 U625 {DOD} (P42955458)
RRH MR FELT 3008 {CHB,SOD,DLF,HYF,IEF} (P23703420)
KCF MISS 3008 M313 {DOD,DLF,HYF,IEF} (P42361823)
KCF MISS 459 H300 {DOD} (P41147198)

		INDIVIDUAL PERFORMANCE		PROGENY	
				NUMBER	AVERAGES
Animal	Birth Wt.	92.0 %	4	102.5 %	
	Weaning Wt.	100.0 %	3	101.3 %	
	Yearling Wt.	100.0 %	1	105.0 %	
	Yearling Ht.		1	3.8 Frame	
	Yr. Sc. Cir.		1	34.6 Cm.	
	Fat Depth	122.0 %	1	162.0 %	
	Ribeye Area	124.0 %	1	97.0 %	
	IMF	133.0 %	1	104.0 %	
SIRE	Birth Wt.		997	99.1 %	
	Weaning Wt.		921	100.8 %	
	Yearling Wt.		722	100.6 %	
	Yearling Ht.	5.2 Frame	382	5.1 Frame	
	Yr. Sc. Cir.	39.7 Cm.	298	35.2 Cm.	
	Fat Depth	118.0 %	510	106.8 %	
	Ribeye Area	108.0 %	510	101.0 %	
	IMF	111.0 %	510	103.0 %	
DAM	Birth Wt.	100.0 %	6	99.8 %	
	Weaning Wt.	100.0 %	5	103.6 %	
	Yearling Wt.	100.0 %	4	105.0 %	
	Yearling Ht.		1	5.6 Frame	
	Yr. Sc. Cir.		1	38.1 Cm.	
	Fat Depth	100.0 %	2	110.0 %	
	Ribeye Area	100.0 %	2	113.5 %	
	IMF	100.0 %	2	141.5 %	



PERFORMANCE AS OF: 09/23/19

SECRETARY, AMERICAN HEREFORD ASSOCIATION

AMERICAN HEREFORD ASSOCIATION

Box 014059, Kansas City, Missouri 64101

PERFORMANCE PEDIGREE

NAME: JW Z80 DOMINETTE 1553 {DLF,HYF,IEF} **SEX:** Cow **HPS:** Polled
(P43553635)

CALVED: Oct. 30, 2014 **TATTOO RE:** 1553 **LE:** 1553 **REGISTRY NUMBER:** 43553635
BREEDER: JOE A WAGGONER LLC, CARTHAGE MS **OWNER:** JOE A WAGGONER LLC, CARTHAGE MS

EPD VALUES	CE EPD	BW EPD	WW EPD	YW EPD	DMI EPD	SC EPD	SCF EPD	MM EPD	MG EPD	MCE EPD	MCW EPD	UDDR EPD	TEXT EPD	CW EPD	FAT EPD	REA EPD	MARB EPD	BMI EPD	BII EPD	CHB EPD
ANIMAL	+3.6 (.39)	+4.8 (.51)	+72 (.45)	+120 (.46)	+0.3 (.15)	+1.2 (.36)	+21.0 (.15)	+16 (.26)	+52 (-)	+1.5 (.22)	+115 (.33)	+1.50 (.49)	+1.30 (.50)	+82 (.27)	+0.049 (.30)	+0.51 (.26)	+0.52 (.26)	+\$ 461 (-)	+\$ 579 (-)	+\$ 130 (-)
SIRE	+1.9 (.55)	+4.9 (.82)	+68 (.74)	+113 (.73)	0.0 (.17)	+1.3 (.62)	+20.7 (.30)	+5 (.52)	+40 (-)	+0.7 (.48)	+124 (.52)	+1.40 (.70)	+1.40 (.38)	+73 (.38)	+0.059 (.43)	+0.61 (.37)	+0.57 (.40)	+\$ 459 (-)	+\$ 577 (-)	+\$ 125 (-)
DAM	+5.7 (.36)	+2.3 (.42)	+57 (.35)	+89 (.38)	+0.2 (.13)	+1.1 (.27)	+21.0 (.20)	+26 (.28)	+55 (-)	+2.7 (.23)	+90 (.28)	+1.30 (.42)	+1.20 (.43)	+68 (.23)	+0.009 (.27)	+0.33 (.23)	+0.35 (.25)	+\$ 432 (-)	+\$ 524 (-)	+\$ 108 (-)



		INDIVIDUAL PERFORMANCE		PROGENY	
				NUMBER	AVERAGES
Animal	Birth Wt.	118.0 %		3	90.7 %
	Weaning Wt.	108.0 %		3	98.3 %
	Yearling Wt.	102.0 %		2	96.5 %
	Yearling Ht.	5.7 Frame		1	3.8 Frame
	Yr. Sc. Cir.			1	31.4 Cm.
	Fat Depth	99.0 %		2	53.0 %
	Ribeye Area	95.0 %		2	93.0 %
	IMF	129.0 %		2	99.5 %
SIRE	Birth Wt.	101.0 %		196	101.1 %
	Weaning Wt.	113.0 %		173	101.1 %
	Yearling Wt.	121.0 %		110	101.1 %
	Yearling Ht.	6.2 Frame		58	6.0 Frame
	Yr. Sc. Cir.	37.7 Cm.		65	35.2 Cm.
	Fat Depth	119.0 %		113	106.4 %
	Ribeye Area	107.0 %		113	99.5 %
	IMF	153.0 %		113	110.6 %
DAM	Birth Wt.	102.0 %		3	100.3 %
	Weaning Wt.	105.0 %		3	99.0 %
	Yearling Wt.	100.0 %		3	92.0 %
	Yearling Ht.			2	5.2 Frame
	Yr. Sc. Cir.				
	Fat Depth	107.0 %		3	73.7 %
	Ribeye Area	99.0 %		3	91.7 %
	IMF	74.0 %		3	116.0 %



PERFORMANCE AS OF: 09/23/19

SECRETARY, AMERICAN HEREFORD ASSOCIATION

AMERICAN HEREFORD ASSOCIATION

Box 014059, Kansas City, Missouri 64101

PERFORMANCE PEDIGREE

NAME: [JW Z103 DOMINETTE 15101 {DLF,HYF,IEF}](#) **SEX:** Cow **HPS:** Scurred
(P43553117)

CALVED: Jan. 16, 2015 **TATTOO RE:** 15101 **LE:** 15101 **REGISTRY NUMBER:** 43553117
BREEDER: [JOE A WAGGONER LLC, CARTHAGE MS](#) **OWNER:** [JOE A WAGGONER LLC, CARTHAGE MS](#)

EPD VALUES	CE EPD	BW EPD	WW EPD	YW EPD	DMI EPD	SC EPD	SCF EPD	MM EPD	MG EPD	MCE EPD	MCW EPD	UDDR EPD	TEAT EPD	CW EPD	FAT EPD	REA EPD	MARB EPD	BMI EPD	BII EPD	CHB EPD
ANIMAL	+1.5 (.33)	+3.2 (.44)	+58 (.38)	+93 (.39)	+0.2 (.13)	+1.0 (.28)	+18.0 (.10)	+28 (.18)	+57 (-)	+2.8 (.16)	+85 (.25)	+1.50 (.45)	+1.40 (.46)	+58 (.19)	+0.039 (.23)	+0.66 (.19)	+0.04 (.20)	+\$ 366 (-)	+\$ 436 (-)	+\$ 92 (-)
SIRE	+1.9 (.42)	+3.6 (.57)	+54 (.50)	+87 (.50)	+0.3 (.16)	+1.1 (.42)	+13.8 (.18)	+28 (.26)	+56 (-)	+3.1 (.27)	+83 (.36)	+1.30 (.48)	+1.40 (.49)	+70 (.25)	+0.039 (.31)	+0.70 (.25)	+0.17 (.27)	+\$ 322 (-)	+\$ 394 (-)	+\$ 106 (-)
DAM	-1.3 (.39)	+2.0 (.49)	+54 (.41)	+80 (.42)	0.0 (.14)	+0.7 (.32)	+21.7 (.16)	+26 (.24)	+53 (-)	+0.8 (.23)	+77 (.33)	+1.50 (.46)	+1.30 (.47)	+54 (.23)	+0.009 (.26)	+0.50 (.22)	+0.05 (.23)	+\$ 416 (-)	+\$ 485 (-)	+\$ 87 (-)



		INDIVIDUAL PERFORMANCE	PROGENY NUMBER	AVERAGES
		Animal	Birth Wt.	104.0 %
	Weaning Wt.	92.0 %	3	103.0 %
	Yearling Wt.	95.0 %	1	107.0 %
	Yearling Ht.			
	Yr. Sc. Cir.			
	Fat Depth	83.0 %	1	105.0 %
	Ribeye Area	94.0 %	1	109.0 %
	IMF	82.0 %	1	74.0 %
SIRE	Birth Wt.		19	104.5 %
	Weaning Wt.		16	99.5 %
	Yearling Wt.		12	96.3 %
Daughters: 5	Yearling Ht.	6.4 Frame	6	4.1 Frame
Calves: 8	Yr. Sc. Cir.	35.9 Cm.	6	31.2 Cm.
Ratio: 99.5	Fat Depth	143.0 %	11	99.1 %
	Ribeye Area	104.0 %	11	99.7 %
	IMF	109.0 %	11	96.0 %
DAM	Birth Wt.	96.0 %	1	104.0 %
	Weaning Wt.		1	92.0 %
	Yearling Wt.		1	95.0 %
	Yearling Ht.			
	Yr. Sc. Cir.			
	Fat Depth		1	83.0 %
	Ribeye Area		1	94.0 %
	IMF		1	82.0 %



PERFORMANCE AS OF: 09/23/19

John A. ...
SECRETARY, AMERICAN HEREFORD ASSOCIATION

AMERICAN HEREFORD ASSOCIATION

Box 014059, Kansas City, Missouri 64101

PERFORMANCE PEDIGREE

NAME: [JW Z311 DOMINETTE 1640 {DLF,HYF,IEF}](#) (P43637492) SEX: Cow HPS: Polled
 CALVED: Oct. 03, 2015 TATTOO RE: 1640 LE: 1640 REGISTRY NUMBER: 43637492
 BREEDER: [JOE A WAGGONER LLC, CARTHAGE MS](#) OWNER: [JOE A WAGGONER LLC, CARTHAGE MS](#)

EPD VALUES	CE EPD	BW EPD	WW EPD	YW EPD	DMI EPD	SC EPD	SCF EPD	MM EPD	MG EPD	MCE EPD	MCW EPD	UDDR EPD	TEAT EPD	CW EPD	FAT EPD	REA EPD	MARB EPD	BMI EPD	BJI EPD	CHB EPD
ANIMAL	+5.4 (.34)	+3.8 (.49)	+58 (.43)	+105 (.44)	+0.3 (.14)	+0.9 (.34)	+15.3 (.13)	+29 (.24)	+58 (-)	+6.3 (.19)	+94 (.30)	+0.70 (.47)	+0.70 (.47)	+1.70 (.22)	+0.039 (.26)	+0.16 (.22)	+0.32 (.22)	+\$ 345 (-)	+\$ 434 (-)	+\$ 111 (-)
SIRE	+2.1 (.72)	+3.5 (.92)	+78 (.87)	+131 (.87)	+0.3 (.15)	+1.4 (.76)	+20.5 (.43)	+29 (.67)	+68 (-)	+6.1 (.65)	+127 (.65)	+1.20 (.83)	+1.20 (.83)	+81 (.40)	+0.069 (.44)	+0.16 (.41)	+0.66 (.40)	+\$ 459 (-)	+\$ 595 (-)	+\$ 128 (-)
DAM	+5.2 (.35)	+4.4 (.51)	+45 (.13)	+79 (.46)	-0.1 (.15)	+0.4 (.35)	+9.8 (.14)	+24 (.26)	+46 (-)	+4.2 (.15)	+84 (.29)	+0.80 (.49)	+0.80 (.49)	+66 (.19)	+0.009 (.23)	+0.36 (.20)	-0.03 (.20)	+\$ 249 (-)	+\$ 297 (-)	+\$ 109 (-)

— [SCHU-LAR 5N OF 9L 3008 {CHB,SOD,DLF,HYF,IEF}](#) (P42375618)

— [SCHU-LAR ON TARGET 225 {SOD,CHB,DLF,HYF,IEF,MSUDF}](#) (P42669011)

— [SCHU-LAR 208 OF 1H 121 ET {DOD}](#) (P42313405)

Sire: [KCF BENNETT ENCORE Z311 ET {CHB,DLF,HYF,IEF,MSUDF}](#) (P43387256)

— [MSU TCF REVOLUTION 4R {SOD,CHB,DLF,HYF,IEF}](#) (P42593689)

— [KCF MISS REVOLUTION X338 ET {DLF,HYF,IEF}](#) (P43155704)

— [JW 718 VICTORIA 9106 {DOD,DLF,HYF,IEF}](#) (P42021800)

Animal: [JW Z311 DOMINETTE 1640 {DLF,HYF,IEF}](#) (P43637492)

— [CL 1 DOMINO 206M {DLF,HYF,IEF}](#) (42270213)

— [HH ADVANCE 6001S \(42673990\)](#)

— [HH MISS ADVANCE 1088L {DOD,DLF,HYF,IEF}](#) (42151488)

Dam: [KB L1 DOMINETTE 186Y {DLF,HYF,IEF}](#) (43179341)

— [OXH DOMINO 1095 {SOD,CHB,DLF,IEF}](#) (42180856)

— [KB L1 DOMINETTE 4129 {DLF,IEF}](#) (42532035)

— [OXH CRYSTAL 1083 {DOD,DLF,HYF,IEF}](#) (42180331)

		INDIVIDUAL PERFORMANCE	PROGENY NUMBER	PROGENY AVERAGES
		Animal	Birth Wt.	107.0 %
	Weaning Wt.	104.0 %	2	108.0 %
	Yearling Wt.	110.0 %	1	108.0 %
	Yearling Ht.		1	6.7 Frame
	Yr. Sc. Cir.			
	Fat Depth	104.0 %	1	106.0 %
	Ribeye Area	104.0 %	1	96.0 %
	IMF	84.0 %	1	81.0 %
SIRE Daughters: 226 Calves: 276 Ratio: 101.2	Birth Wt.		1495	101.2 %
	Weaning Wt.		1330	102.7 %
	Yearling Wt.		818	102.5 %
	Yearling Ht.	6.1 Frame	251	5.6 Frame
	Yr. Sc. Cir.	36.2 Cm.	315	35.7 Cm.
	Fat Depth	112.0 %	695	103.8 %
	Ribeye Area	93.0 %	695	99.3 %
	IMF	159.0 %	693	105.8 %
DAM	Birth Wt.	97.0 %	6	98.7 %
	Weaning Wt.	79.0 %	5	103.8 %
	Yearling Wt.	101.0 %	4	102.3 %
	Yearling Ht.		2	5.6 Frame
	Yr. Sc. Cir.		2	31.4 Cm.
	Fat Depth		3	88.7 %
	Ribeye Area		3	87.7 %
	IMF		3	100.0 %



PERFORMANCE AS OF: 09/23/19

Joe A Waggoner
 SECRETARY, AMERICAN HEREFORD ASSOCIATION

AMERICAN HEREFORD ASSOCIATION

Box 014059, Kansas City, Missouri 64101

PERFORMANCE PEDIGREE

NAME: [JW Z103 DOMINETTE 1790 {DLF,HYF,IEF}](#) (P43741295) **SEX:** Cow **HPS:** Polled
CALVED: Nov. 01, 2016 **TATTOO RE:** 1790 **LE:** 1790 **REGISTRY NUMBER:** 43741295
BREEDER: [JOE A WAGGONER LLC, CARTHAGE MS](#) **OWNER:** [JOE A WAGGONER LLC, CARTHAGE MS](#)

EPD VALUES	CE EPD	BW EPD	WW EPD	YW EPD	DMI EPD	SC EPD	SCF EPD	MM EPD	MG EPD	MCE EPD	MCW EPD	UDDR EPD	TEAT EPD	CW EPD	FAT EPD	REA EPD	MARB EPD	BMI EPD	BII EPD	CHB EPD
ANIMAL	+12.4 (.34)	-1.2 (.49)	+37 (.41)	+63 (.43)	+0.2 (.14)	+0.5 (.32)	+16.7 (.12)	+29 (.20)	+47 (-)	+4.3 (.18)	+36 (.31)	+1.40 (.43)	+1.50 (.44)	+46 (.23)	+0.049 (.27)	+0.26 (.23)	+0.17 (.25)	+\$ 321 (-)	+\$ 380 (-)	+\$ 71 (-)
SIRE	+1.9 (.42)	+3.6 (.57)	+54 (.50)	+87 (.50)	+0.3 (.16)	+1.1 (.42)	+13.8 (.19)	+28 (.26)	+56 (-)	+3.1 (.27)	+83 (.36)	+1.30 (.48)	+1.40 (.49)	+70 (.25)	+0.039 (.31)	+0.70 (.25)	+0.17 (.27)	+\$ 322 (-)	+\$ 394 (-)	+\$ 106 (-)
DAM	+15.3 (.34)	-3.1 (.54)	+40 (.16)	+67 (.49)	+0.1 (.15)	+0.6 (.38)	+19.7 (.20)	+29 (.34)	+49 (-)	+3.7 (.25)	+24 (.45)	+1.40 (.55)	+1.60 (.56)	+63 (.27)	+0.089 (.32)	+0.30 (.27)	+0.45 (.29)	+\$ 396 (-)	+\$ 479 (-)	+\$ 93 (+)

[CL 1 DOMINO 590R {SOD,DLF,IEF}](#) (42571244)
[CL 1 DOMINO 732T {SOD,DLF,IEF}](#) (42788346)
[CL 1 DOMINETTE 507R {DOD,DLF,HYF,IEF}](#) (42573482)
 Sire: [KCF BENNETT 732T Z103 ET](#) (P43282693)
[EFBEEF SCHU-LAR PROFICIENT N093 {SOD,DLF,HYF,IEF,MSUDF}](#) (P42444860)
[KCF MISS PROFICIENT U201 {DLF,HYF,IEF,MSUDF}](#) (P42903703)
[KCF MISS 774 {L82}](#) (P42174245)
 Animal: [JW Z103 DOMINETTE 1790 {DLF,HYF,IEF}](#) (P43741295)
[BAR JZ TRADITION 434V {SOD,DLF,HYF,IEF}](#) (P23143259)
[EFBEEF SCHU-LAR PROFICIENT N093 {SOD,DLF,HYF,IEF,MSUDF}](#) (P42444860)
[GERBER 117F DIXIE 009K {DLF,HYF,IEF}](#) (P42068219)
 Dam: [BBF MISS FLO U23 {DLF,HYF,IEF}](#) (P42938991)
[FFI TONS LEGEND 242 {SOD,HYF}](#) (P42016383)
[BBF FLOS LEGEND S25 {DLF,HYF,IEF}](#) (P42762654)
[BBF MISS FLO K085 P20](#) (P42525925)

	INDIVIDUAL PERFORMANCE	PROGENY	
		NUMBER	AVERAGES
Animal	Birth Wt.	100.0 %	82.0 %
	Weaning Wt.	90.0 %	98.0 %
	Yearling Wt.	90.0 %	
	Yearling Ht.		
	Yr. Sc. Cir.		
	Fat Depth	136.0 %	
	Ribeye Area	91.0 %	
IMF	102.0 %		
SIRE Daughters: 5 Calves: 8 Ratio: 99.5	Birth Wt.		104.5 %
	Weaning Wt.		99.5 %
	Yearling Wt.		96.3 %
	Yearling Ht.	6.4 Frame	4.1 Frame
	Yr. Sc. Cir.	35.9 Cm.	31.2 Cm.
	Fat Depth	143.0 %	99.1 %
	Ribeye Area	104.0 %	99.7 %
	IMF	109.0 %	96.0 %
DAM	Birth Wt.	72.0 %	93.5 %
	Weaning Wt.	94.0 %	98.0 %
	Yearling Wt.	100.0 %	98.6 %
	Yearling Ht.		5.7 Frame
	Yr. Sc. Cir.		32.6 Cm.
	Fat Depth	100.0 %	102.0 %
	Ribeye Area	100.0 %	107.9 %
IMF	100.0 %	115.1 %	



PERFORMANCE AS OF: 09/23/19

SECRETARY, AMERICAN HEREFORD ASSOCIATION

AMERICAN HEREFORD ASSOCIATION

Box 014059, Kansas City, Missouri 64101

PERFORMANCE PEDIGREE

NAME: [JW Z311 DOMINETTE 17136 {DLF,HYF,IEF}](#) **SEX:** Cow **HPS:** Polled
(P43750743)

CALVED: Nov. 29, 2016 **TATTOO RE:** 17136 **LE:** 17136 **REGISTRY NUMBER:** 43750743
BREEDER: [JOE A WAGGONER LLC, CARTHAGE MS](#) **OWNER:** [JOE A WAGGONER LLC, CARTHAGE MS](#)

EPD VALUES	CE EPD	BW EPD	WW EPD	YW EPD	DMI EPD	SC EPD	SCF EPD	MM EPD	MG EPD	MCE EPD	MCW EPD	UDDR EPD	TEAT EPD	CW EPD	FAT EPD	REA EPD	MARB EPD	BMI EPD	BII EPD	CHB EPD
ANIMAL	+0.8 (.39)	+2.4 (.48)	+57 (.41)	+94 (.42)	+0.2 (.14)	+1.1 (.32)	+19.3 (.12)	+28 (.20)	+57 (-)	+4.1 (.22)	+79 (.29)	+1.30 (.43)	+1.30 (.44)	+57 (.21)	+0.039 (.26)	+0.37 (.21)	+0.24 (.22)	+\$ 389 (-)	+\$ 473 (-)	+\$ 91 (-)
SIRE	+2.1 (.72)	+3.5 (.92)	+78 (.87)	+131 (.87)	+0.3 (.15)	+1.4 (.76)	+20.5 (.43)	+29 (.67)	+68 (-)	+6.1 (.65)	+127 (.65)	+1.20 (.81)	+1.20 (.83)	+81 (.40)	+0.069 (.44)	+0.16 (.41)	+0.66 (.40)	+\$ 459 (-)	+\$ 595 (-)	+\$ 128 (-)
DAM	+1.5 (.33)	+3.2 (.44)	+58 (.38)	+93 (.39)	+0.2 (.13)	+1.0 (.26)	+18.0 (.10)	+28 (.18)	+57 (-)	+2.8 (.16)	+85 (.25)	+1.50 (.45)	+1.40 (.46)	+58 (.19)	+0.039 (.23)	+0.66 (.19)	+0.04 (.20)	+\$ 366 (-)	+\$ 436 (-)	+\$ 92 (-)

[SCHU-LAR 5N OF 9L 3008 {CHB,SOD,DLF,HYF,IEF} \(P42375618\)](#)
[SCHU-LAR ON TARGET 22S {SOD,CHB,DLF,HYF,IEF,MSUDF} \(P42669011\)](#)
[SCHU-LAR 208 OF 1H 121 ET {DOD} \(P42313405\)](#)
 Sire: [KCF BENNETT ENCORE Z311 ET {CHB,DLF,HYF,IEF,MSUDF} \(P43387256\)](#)
[MSU TCF REVOLUTION 4R {SOD,CHB,DLF,HYF,IEF} \(P42593689\)](#)
[KCF MISS REVOLUTION X338 ET {DLF,HYF,IEF} \(P43155704\)](#)
[JW 718 VICTORIA 9106 {DOD,DLF,HYF,IEF} \(P42021800\)](#)
 Animal: [JW Z311 DOMINETTE 17136 {DLF,HYF,IEF} \(P43750743\)](#)
[CL 1 DOMINO 732T {SOD,DLF,IEF} \(42788346\)](#)
[KCF BENNETT 732T Z103 ET \(P43282693\)](#)
[KCF MISS PROFICIENT U201 {DLF,HYF,IEF,MSUDF} \(P42903703\)](#)
 Dam: [JW Z103 DOMINETTE 15101 {DLF,HYF,IEF} \(P43553117\)](#)
[CMR ILR DOMINO 86P {SOD,DLF,HYF,IEF} \(P42613369\)](#)
[GV CMR 350T MISS 86P A196 {DLF,HYF,IEF} \(P43381789\)](#)
[GRANDVIEW CMR P606 LADY 350T ET \(P42982899\)](#)

		INDIVIDUAL PERFORMANCE	PROGENY NUMBER	PROGENY AVERAGES
		Animal	Birth Wt.	97.0 %
	Weaning Wt.	102.0 %	1	94.0 %
	Yearling Wt.	107.0 %		
	Yearling Ht.			
	Yr. Sc. Cir.			
	Fat Depth	105.0 %		
	Ribeye Area	109.0 %		
	IMF	74.0 %		
SIRE	Birth Wt.		1495	101.2 %
	Weaning Wt.		1330	102.7 %
	Yearling Wt.		818	102.5 %
Daughters: 226	Yearling Ht.	6.1 Frame	251	5.6 Frame
Calves: 276	Yr. Sc. Cir.	36.2 Cm.	315	35.7 Cm.
Ratio: 101.2	Fat Depth	112.0 %	695	103.8 %
	Ribeye Area	93.0 %	695	99.3 %
	IMF	159.0 %	693	105.8 %
DAM	Birth Wt.	104.0 %	3	106.0 %
	Weaning Wt.	92.0 %	3	103.0 %
	Yearling Wt.	95.0 %	1	107.0 %
	Yearling Ht.			
	Yr. Sc. Cir.			
	Fat Depth	83.0 %	1	105.0 %
	Ribeye Area	94.0 %	1	109.0 %
	IMF	82.0 %	1	74.0 %



PERFORMANCE AS OF: 09/23/19

SECRETARY, AMERICAN HEREFORD ASSOCIATION

AMERICAN HEREFORD ASSOCIATION

Box 014059, Kansas City, Missouri 64101

PERFORMANCE PEDIGREE

NAME: JW 936 DOMINETTE 18056 **SEX:** Cow **HPS:** Polled
{DLF,HYF,IEF,MSUDC} (P43855476)
CALVED: Oct. 14, 2017 **TATTOO RE:** 18056 **LE:** 18056 **REGISTRY NUMBER:** 43855476
BREEDER: JOE A WAGGONER LLC, CARTHAGE MS **OWNER:** JOE A WAGGONER LLC, CARTHAGE MS

EPD VALUES	CE EPD	BW EPD	WW EPD	YW EPD	DMI EPD	SC EPD	SCF EPD	MM EPD	MG EPD	MCE EPD	MCW EPD	UDDR EPD	TEAT EPD	CW EPD	FAT EPD	REA EPD	MARB EPD	BMI EPD	BII EPD	CHB EPD
ANIMAL	+14.5 (.34)	+1.2 (.48)	+57 (.42)	+88 (.44)	+0.6 (.14)	+1.3 (.33)	+13.7 (.14)	+25 (.19)	+54 (-)	+11.7 (.17)	+45 (.31)	+1.50 (.39)	+1.50 (.40)	+70 (.23)	+0.049 (.27)	+0.36 (.22)	+0.17 (.23)	+\$ 298 (-)	+\$ 374 (-)	+\$ 96 (-)
SIRE	+6.5 (.65)	+3.6 (.92)	+72 (.88)	+113 (.87)	+0.3 (.21)	+1.7 (.79)	+15.6 (.49)	+28 (.74)	+64 (-)	+9.1 (.68)	+103 (.72)	+1.40 (.83)	+1.30 (.84)	+83 (.42)	+0.039 (.50)	+0.44 (.40)	+0.29 (.43)	+\$ 371 (-)	+\$ 470 (-)	+\$ 128 (-)
DAM	+5.4 (.37)	+2.4 (.49)	+56 (.41)	+92 (.43)	+0.6 (.14)	+1.3 (.30)	+11.9 (.12)	+22 (.21)	+50 (-)	+5.6 (.15)	+85 (.27)	+1.30 (.46)	+1.30 (.47)	+73 (.18)	+0.009 (.22)	+0.46 (.18)	+0.08 (.19)	+\$ 280 (-)	+\$ 347 (-)	+\$ 105 (-)

SCHU-LAR 5N OF 9L 3008 {CHB,SOD,DLF,HYF,IEF} (P42375618)
SCHU-LAR ON TARGET 22S {SOD,CHB,DLF,HYF,IEF,MSUDF} (P42669011)
SCHU-LAR 208 OF 1H 121 ET {DOD} (P42313405)
 Sire: HYALITE ON TARGET 936 {CHB,SOD,DLF,HYF,IEF,MSUDC} (P42986803)
KT TOP SECRET 1030 {SOD,DLF,HYF,IEF,MSUDF} (P42205594)
HYALITE TS LASS 310 {DLF,HYF,IEF} (P42374645)
HYALITE 215F LASS 812 {DOD} (P41009869)
 Animal: JW 936 DOMINETTE 18056 {DLF,HYF,IEF,MSUDC} (P43855476)
HH ADVANCE 6001S (42673990)
KB L1 DOMINO 0186X {DLF,HYF,IEF} (43164351)
MONTANA MISS 389 {DOD,DLF,HYF,IEF} (42363987)
 Dam: MONTANA MISS 329 A {DLF,HYF,IEF} (43369699)
KB L1 DOMINO 826U {DLF,HYF,IEF} (42878538)
MONTANA MISS 137Y (43181195)
MONTANA MISS 5134R (42637906)

		INDIVIDUAL PERFORMANCE	PROGENY NUMBER	PROGENY AVERAGES
		Animal	Birth Wt.	112.0 %
	Weaning Wt.	106.0 %		
	Yearling Wt.	111.0 %		
	Yearling Ht.	6.8 Frame		
	Yr. Sc. Cir.			
	Fat Depth	93.0 %		
	Ribeye Area	96.0 %		
	IMF	93.0 %		
SIRE Daughters: 285 Calves: 568 Ratio: 101:5	Birth Wt.	106.0 %	1234	101.3 %
	Weaning Wt.	111.0 %	1082	102.2 %
	Yearling Wt.	112.0 %	741	100.4 %
	Yearling Ht.		248	5.4 Frame
	Yr. Sc. Cir.	39.0 Cm.	336	36.0 Cm.
	Fat Depth	116.0 %	696	102.2 %
	Ribeye Area	115.0 %	695	100.8 %
	IMF	78.0 %	694	96.8 %
DAM	Birth Wt.	88.0 %	4	104.3 %
	Weaning Wt.	111.0 %	3	97.7 %
	Yearling Wt.	113.0 %	1	111.0 %
	Yearling Ht.		1	6.8 Frame
	Yr. Sc. Cir.			
	Fat Depth		1	93.0 %
	Ribeye Area		1	96.0 %
	IMF		1	93.0 %



PERFORMANCE AS OF: 09/23/19

SECRETARY, AMERICAN HEREFORD ASSOCIATION

AMERICAN HEREFORD ASSOCIATION

Box 014059, Kansas City, Missouri 64101

PERFORMANCE PEDIGREE

NAME: [JW 936 FLO 18044 {DLF,HYF,IEF,MSUDC}](#) **SEX:** Cow **HPS:** Polled
[\(P43855481\)](#)
CALVED: Oct. 11, 2017 **TATTOO RE:** 18044 **LE:** 18044 **REGISTRY NUMBER:** 43855481
BREEDER: [JOE A WAGGONER LLC, CARTHAGE MS](#) **OWNER:** [JOE A WAGGONER LLC, CARTHAGE MS](#)

EPD VALUES	CE EPD	BW EPD	WW EPD	YW EPD	DMI EPD	SC EPD	SCF EPD	MM EPD	MG EPD	MCE EPD	MCW EPD	UDDR EPD	TEAT EPD	CW EPD	FAT EPD	REA EPD	MARB EPD	BMI EPD	BII EPD	CHB EPD
ANIMAL	+9.9 (.35)	+0.5 (.49)	+50 (.44)	+83 (.45)	+0.2 (.14)	+1.3 (.35)	+17.6 (.17)	+29 (.23)	+54 (-)	+5.9 (.21)	+54 (.35)	+1.40 (.41)	+1.40 (.43)	+66 (.24)	+0.049 (.27)	+0.45 (.22)	+0.35 (.24)	+5.375 (-)	+5.459 (-)	+5.103 (-)
SIRE	+6.5 (.65)	+3.6 (.92)	+72 (.88)	+113 (.87)	+0.3 (.21)	+1.7 (.79)	+15.6 (.49)	+28 (.74)	+64 (-)	+9.1 (.68)	+103 (.72)	+1.40 (.83)	+1.30 (.84)	+83 (.42)	+0.039 (.50)	+0.44 (.40)	+0.29 (.43)	+5.371 (-)	+5.470 (-)	+5.128 (-)
DAM	+15.3 (.34)	-3.1 (.54)	+40 (.16)	+67 (.49)	+0.1 (.15)	+0.6 (.38)	+19.7 (.20)	+29 (.34)	+49 (-)	+3.7 (.25)	+24 (.45)	+1.40 (.55)	+1.60 (.56)	+63 (.27)	+0.089 (.32)	+0.30 (.27)	+0.45 (.29)	+5.396 (-)	+5.479 (-)	+5.93 (-)

[SCHU-LAR 5N OF 9L 3008 {CHB,SOD,DLF,HYF,IEF} \(P42375618\)](#)
[SCHU-LAR ON TARGET 22S {SOD,CHB,DLF,HYF,IEF,MSUDF} \(P42669011\)](#)
[SCHU-LAR 208 OF 1H 121 ET {DOD} \(P42313405\)](#)
 Sire: [HYALITE ON TARGET 936 {CHB,SOD,DLF,HYF,IEF,MSUDC} \(P42986803\)](#)
[KT TOP SECRET 1030 {SOD,DLF,HYF,IEF,MSUDF} \(P42205594\)](#)
[HYALITE TS LASS 310 {DLF,HYF,IEF} \(P42374645\)](#)
[HYALITE 215F LASS 812 {DOD} \(P41009869\)](#)
 Animal: [JW 936 FLO 18044 {DLF,HYF,IEF,MSUDC} \(P43855481\)](#)
[BAR JZ TRADITION 434V {SOD,DLF,HYF,IEF} \(P23143259\)](#)
[FFBEEF SCHU-LAR PROFICIENT N093 {SOD,DLF,HYF,IEF,MSUDF} \(P42444860\)](#)
[GERBER 117F DIXIE 009K {DLF,HYF,IEF} \(P42068219\)](#)
 Dam: [BBF MISS FLO U23 {DLF,HYF,IEF} \(P42938991\)](#)
[FELTONS LEGEND 242 {SOD,HYF} \(P42016383\)](#)
[BBF FLOS LEGEND S2S {DLF,HYF,IEF} \(P42762654\)](#)
[BBF MISS FLO K085 P20 \(P42525925\)](#)

		INDIVIDUAL PERFORMANCE	PROGENY	
			NUMBER	AVERAGES
Animal	Birth Wt.	105.0 %		
	Weaning Wt.	93.0 %		
	Yearling Wt.	99.0 %		
	Yearling Ht.	6.2 Frame		
	Yr. Sc. Cir.			
	Fat Depth	103.0 %		
	Ribeye Area	116.0 %		
	IMF	87.0 %		
SIRE	Birth Wt.	106.0 %	1234	101.3 %
	Weaning Wt.	111.0 %	1082	102.2 %
	Yearling Wt.	112.0 %	741	100.4 %
	Yearling Ht.		248	5.4 Frame
	Yr. Sc. Cir.	39.0 Cm.	336	36.0 Cm.
	Fat Depth	116.0 %	696	102.2 %
	Ribeye Area	115.0 %	695	100.8 %
	IMF	78.0 %	694	96.8 %
DAM	Birth Wt.	72.0 %	8	93.5 %
	Weaning Wt.	94.0 %	8	98.0 %
	Yearling Wt.	100.0 %	8	98.6 %
	Yearling Ht.		2	5.7 Frame
	Yr. Sc. Cir.		1	32.6 Cm.
	Fat Depth	100.0 %	8	102.0 %
	Ribeye Area	100.0 %	8	107.9 %
	IMF	100.0 %	8	115.1 %



PERFORMANCE AS OF: 09/23/19

Joe A Waggoner
 SECRETARY, AMERICAN HEREFORD ASSOCIATION

AMERICAN HEREFORD ASSOCIATION

Box 014059, Kansas City, Missouri 64101

PERFORMANCE PEDIGREE

NAME: JW 936 DOMINETTE 18084 ET SEX: Cow HPS: Polled
{DLF,HYF,IEF,MSUDC} (P43855692)

CALVED: Oct. 30, 2017 TATTOO RE: 18084 LE: 18084 REGISTRY NUMBER: 43855692
 BREEDER: JOE A WAGGONER LLC, CARTHAGE MS OWNER: JOE A WAGGONER LLC, CARTHAGE MS

EPD VALUES	CE EPD	BW EPD	WW EPD	YW EPD	DMI EPD	SC EPD	SCF EPD	MM EPD	MG EPD	MCE EPD	MCW EPD	UDDR EPD	TEAT EPD	CW EPD	FAT EPD	REA EPD	MARB EPD	BMI EPD	BII EPD	CHB EPD
ANIMAL	+12.4 (.31)	+1.4 (.43)	+51 (.39)	+81 (.40)	+0.2 (.13)	+0.6 (.35)	+16.1 (.16)	+27 (.22)	+53 (-)	+11.0 (.19)	+79 (.32)	+1.50 (.41)	+1.50 (.42)	+67 (.22)	+0.059 (.27)	+0.23 (.23)	+0.28 (.23)	+\$ 347 (-)	+\$ 428 (-)	+\$ 100 (-)
SIRE	+6.5 (.65)	+3.6 (.92)	+72 (.88)	+113 (.87)	+0.3 (.21)	+1.7 (.79)	+15.6 (.49)	+28 (.74)	+64 (-)	+9.1 (.66)	+103 (.72)	+1.40 (.83)	+1.30 (.84)	+83 (.42)	+0.039 (.50)	+0.44 (.40)	+0.29 (.43)	+\$ 371 (-)	+\$ 470 (-)	+\$ 128 (-)
DAM	+3.7 (.35)	+3.5 (.52)	+51 (.44)	+82 (.46)	+0.1 (.15)	+0.6 (.36)	+16.6 (.22)	+27 (.34)	+52 (-)	+5.6 (.28)	+89 (.34)	+1.30 (.58)	+1.10 (.58)	+53 (.22)	+0.029 (.30)	-0.21 (.23)	+0.09 (.25)	+\$ 325 (-)	+\$ 395 (-)	+\$ 80 (-)

— SCHU-LAR 5N OF 9L 300R {CHB,SOD,DLF,HYF,IEF} (P42375618)

— SCHU-LAR ON TARGET 22S {SOD,CHB,DLF,HYF,IEF,MSUDF} (P42669011)

— SCHU-LAR 208 OF 1H 121 ET {DOD} (P42313405)

Sire: HYALITE ON TARGET 936 {CHB,SOD,DLF,HYF,IEF,MSUDC} (P42986803)

— KT TOP SECRET 1030 {SOD,DLF,HYF,IEF,MSUDF} (P42205594)

— HYALITE TS LASS 310 {DLF,HYF,IEF} (P42374645)

— HYALITE 215F LASS 812 {DOD} (P41009869)

Animal: JW 936 DOMINETTE 18084 ET {DLF,HYF,IEF,MSUDC} (P43855692)

— LI DOMINO 890061 {DLF,IEF} (19048307)

— CL 1 DOMINO 484 {SOD,DLF,HYF,IEF} (19427523)

— CL 1 DOMINETTE 761 (18833592)

Dam: CMR GV 484 MISS 5071 {DLF,HYF,IEF} (42777048)

— ANHINGA VIC 69R 579 {SOD,DLF,HYF,IEF} (P22959766)

— JW 579 VICTORIA 8178 {DOD} (41161511)

— JW 434V QUEEN 533 (P23901186)

		INDIVIDUAL PERFORMANCE		PROGENY	
				NUMBER	AVERAGES
Animal	Birth Wt.				
	Weaning Wt.				
	Yearling Wt.				
	Yearling Ht.	5.4 Frame			
	Yr. Sc. Cir.				
	Fat Depth	133.0 %			
	IMF	92.0 %			
SIRE	Birth Wt.	106.0 %	1234	101.3 %	
	Weaning Wt.	111.0 %	1082	102.2 %	
	Yearling Wt.	112.0 %	741	100.4 %	
	Yearling Ht.		248	5.4 Frame	
	Yr. Sc. Cir.	39.0 Cm.	336	36.0 Cm.	
	Fat Depth	116.0 %	696	102.2 %	
	IMF	78.0 %	694	96.8 %	
DAM	Birth Wt.	98.0 %	11	99.0 %	
	Weaning Wt.	95.0 %	9	102.3 %	
	Yearling Wt.		5	100.2 %	
	Yearling Ht.		25	5.9 Frame	
	Yr. Sc. Cir.		11	32.2 Cm.	
	Fat Depth		34	94.1 %	
	IMF		34	95.4 %	



PERFORMANCE AS OF: 09/23/19

John A. Waggoner
 SECRETARY, AMERICAN HEREFORD ASSOCIATION

AI Sires

AMERICAN HEREFORD ASSOCIATION

Box 014059, Kansas City, Missouri 64101

PERFORMANCE PEDIGREE

NAME: JDH VICTOR 719T 33Z ET **SEX:** Bull **HPS:** Polled
{CHB,DLF,HYF,IEF,MSUDF} (P43294080)
CALVED: Feb. 20, 2012 **TATTOO RE:** 33Z **LE:** 33Z **REGISTRY NUMBER:** 43294080
BREEDER: MARTY DELANEY, LAKE BENTON MN **OWNER:** LORENZEN FARMS, CHRISMAN IL
DELANEY HEREFORDS INC, LAKE BENTON MN
ADE POLLED HEREFORDS, QUANTICO MD

EPD VALUES	CE EPD	BW EPD	WW EPD	YW EPD	DMJ EPD	SC EPD	SCF EPD	MM EPD	HG EPD	MCE EPD	MCW EPD	UDDR EPD	TEAT EPD	CV EPD	FAT EPD	REA EPD	MARB EPD	BMI EPD	BIL EPD	CHB EPD
ANIMAL	+8.0 (.58)	+1.5 (.86)	+62 (.76)	+107 (.74)	+0.2 (.46)	-1.5 (.51)	+21.0 (.30)	+40 (.49)	+77 (.1)	+4.8 (.44)	+105 (.51)	+1.40 (.69)	+1.40 (.69)	+89 (.55)	+0.019 (.54)	+0.59 (.53)	+0.12 (.53)	+5.453 (.1)	+5.535 (.1)	+5.141 (.1)
SIRE	+5.8 (.81)	+0.6 (.85)	+60 (.92)	+87 (.92)	+0.1 (.52)	+1.4 (.83)	+29.4 (.73)	+29 (.87)	+59 (.1)	-2.1 (.80)	+73 (.82)	+1.30 (.89)	+1.40 (.90)	+63 (.57)	-0.021 (.56)	+0.49 (.54)	-0.04 (.58)	+5.533 (.1)	+5.607 (.1)	+5.101 (.1)
DAM	+8.9 (.39)	+2.4 (.51)	+56 (.46)	+97 (.46)	+0.1 (.12)	+1.3 (.31)	+9.8 (.20)	+36 (.38)	+64 (.1)	+9.4 (.27)	+107 (.29)	+1.30 (.44)	+1.10 (.45)	+87 (.23)	-0.011 (.28)	+0.22 (.22)	(.25)	+5.289 (.1)	+5.355 (.1)	+5.143 (.1)

— HRP THM VICTOR 109W 9329 (SOD) (P23705123)
 — DRF IWR PRINCE VICTOR 711 (SOD,DLF,HYF,IEF,MSUDF) (P41141619)
 — RHF 964 VICTRA 4057 (P22857143)
 — Sire: TH 122 711 VICTOR 719T (SOD,DLF,HYF,IEF,MSUDF) (P42800895)
 — NJW TY WRANGLER 19D (SOD,DLF,HYF,IEF) (P23758169)
 — KRCR 190 DOMINETTE 122 (DLF,IEF) (P42320359)
 — KRCR DOMINETTE 9112 (P42008924)
 Animal: JDH VICTOR 719T 33Z ET (CHB,DLF,HYF,IEF,MSUDF) (P43294080)
 — RFPITAL ONLINE 1J2L (CHB,SOD,DLF,HYF,IEF) (P42254327)
 — AH YANKEE 105 (SOD,CHR) (P42732198)
 — CRR 003 VIOLET 349 (DLF,HYF,IEF) (P42428481)
 — Dam: JDH MS YANKEE 11U ET (DLF,HYF,IEF) (P42916830)
 — ISAACS 517 075 (P42168852)
 — JDF MS ISAACS 025 50N (DOD) (P42406404)
 — JDF MISS 223B 4E (P23841251)

	INDIVIDUAL PERFORMANCE		PROGENY	
		NUMBER	AVERAGES	
Animal Daughters: 45 Calves: 56 Ratio: 103.7	Birth Wt.	508	99.8 %	
	Weaning Wt.	269	100.5 %	
	Yearling Wt.	139	101.8 %	
	Yearling Ht.	23	6.0 Frame	
	Yr. Sc. Cir.	26	36.1 Cm.	
	Fat Depth	114.0 %	129	100.7 %
	Ribeye Area	101.0 %	129	99.9 %
	IMF	94.0 %	129	101.1 %
SIRE Daughters: 1085 Calves: 2798 Ratio: 101.2	Birth Wt.	80.0 %	3924	98.6 %
	Weaning Wt.	100.0 %	3304	101.1 %
	Yearling Wt.	98.0 %	1610	100.2 %
	Yearling Ht.		328	5.3 Frame
	Yr. Sc. Cir.		357	36.3 Cm.
	Fat Depth	83.0 %	932	97.7 %
	Ribeye Area	104.0 %	932	99.2 %
	IMF	93.0 %	932	96.5 %
DAM	Birth Wt.	7	98.1 %	
	Weaning Wt.	7	104.3 %	
	Yearling Wt.	5	101.2 %	
	Yearling Ht.			
	Yr. Sc. Cir.			
	Fat Depth	99.0 %	10	96.2 %
	Ribeye Area	107.0 %	10	103.2 %
	IMF	89.0 %	10	83.5 %



PERFORMANCE AS OF: 07/16/19

Scott W. ...
 SECRETARY, AMERICAN HEREFORD ASSOCIATION

AMERICAN HEREFORD ASSOCIATION

Box 014059, Kansas City, Missouri 64101

PERFORMANCE PEDIGREE

NAME: KCF BENNETT REVOLUTION X51
<CHB,SOD,DLF,HYF,IEF> (P43081556) **SEX:** Bull **HPS:** Polled (Homozyg)
CALVED: Feb. 14, 2010 **TATTOO RE:** X51 **LE:** **REGISTRY NUMBER:** 43081556
BREEDER: KNOLL CREST FARM, RED HOUSE VA **OWNER:** KNOLL CREST FARM, RED HOUSE VA
WALKER POLLED HEREFORD FARM, MORRISON TN
 MCCOY CATTLE COMPANY LTD

EPD VALUES	CE EPD	BW EPD	WW EPD	YW EPD	DMI EPD	SC EPD	SCF EPD	MM EPD	HG EPD	MCE EPD	MCV EPD	UDDR EPD	TEAT EPD	CV EPD	FAT EPD	REA EPD	MARB EPD	BMI EPD	811 EPD	CHB EPD
ANIMAL	+3.3 (.68)	+4.6 (.92)	+72 (.87)	+117 (.87)	+0.5 (.53)	+1.3 (.78)	+26.8 (.50)	+15 (.74)	+51 (-)	+3.3 (.68)	+121 (.73)	+1.50 (.84)	+1.60 (.86)	+108 (.58)	+0.029 (.60)	+1.30 (.57)	+0.55 (.57)	+5.587 (-)	+5.707 (-)	+5.165 (-)
SIRE	+3.5 (.81)	+2.7 (.95)	+65 (.91)	+103 (.91)	+0.6 (.50)	+1.1 (.85)	+26.2 (.77)	+23 (.89)	+55 (-)	+5.3 (.82)	+109 (.86)	+1.40 (.90)	+1.40 (.90)	+87 (.56)	+0.049 (.51)	+0.87 (.53)	+0.21 (.54)	+5.520 (-)	+5.612 (-)	+5.122 (-)
DAM	+9.3 (.53)	+0.3 (.71)	+53 (.65)	+79 (.64)	+0.1 (.27)	+1.2 (.52)	+21.9 (.29)	+20 (.47)	+47 (-)	+3.5 (.42)	+64 (.53)	+1.60 (.64)	+1.70 (.66)	+76 (.40)	-0.011 (.46)	+0.82 (.39)	+0.19 (.41)	+5.452 (-)	+5.528 (-)	+5.121 (-)

Animal: KCF BENNETT REVOLUTION X51 <CHB,SOD,DLF,HYF,IEF> (P43081556)
 Sire: MSU TCF REVOLUTION 4R <SOD,CHB,DLF,HYF,IEF> (P42593689)
REMITAL ONLINE 122L <CHB,SOD,DLF,HYF,IEF> (P42284372)
MSU TCF RACHAEL FT. 54N <DLF,HYF,IEF> (P42382509)
MS MISS ADV 786G 181 <40007389>
 Dam: KCF MISS PROFICIENT U201 <DLF,HYF,IEF,MSUDF> (P42903703)
FELTONS DOMINO 774 <SOD,DLF,HYF,IEF> (P23864055)
KCF MISS 774 LR <P42174245>
KCF MISS 802Q D170 <DOD> (P23825211)

		INDIVIDUAL PERFORMANCE		PROGENY	
				NUMBER	AVERAGES
Animal	Birth Wt.	102.0 %	1484	101.9 %	
	Weaning Wt.	123.0 %	1232	101.8 %	
	Yearling Wt.	121.0 %	847	101.5 %	
	Yearling Ht.	6.3 Frame	288	5.8 Frame	
	Yr. Sc. Cir.	37.6 Cm.	319	35.9 Cm.	
	Fat Depth	122.0 %	736	100.2 %	
	Ribeye Area	121.0 %	736	104.0 %	
	IMF	118.0 %	735	100.9 %	
SIRE	Birth Wt.	87.0 %	5952	100.2 %	
	Weaning Wt.	89.0 %	5165	101.6 %	
	Yearling Wt.	103.0 %	2644	100.8 %	
	Yearling Ht.		1022	5.6 Frame	
	Yr. Sc. Cir.		694	35.6 Cm.	
	Fat Depth		1954	102.8 %	
	Ribeye Area		1954	102.2 %	
	IMF		1951	99.7 %	
DAM	Birth Wt.	87.0 %	4	97.0 %	
	Weaning Wt.	106.0 %	4	108.3 %	
	Yearling Wt.	104.0 %	3	111.0 %	
	Yearling Ht.		34	5.9 Frame	
	Yr. Sc. Cir.		36	34.6 Cm.	
	Fat Depth	106.0 %	56	100.9 %	
	Ribeye Area	108.0 %	56	105.5 %	
	IMF	68.0 %	56	94.4 %	



PERFORMANCE AS OF: 07/16/19

SECRETARY AMERICAN HEREFORD ASSOCIATION

AMERICAN HEREFORD ASSOCIATION
 Box 014059, Kansas City, Missouri 64101
PERFORMANCE PEDIGREE

NAME: KCF BENNETT DEVOUT B716 ET **SEX:** Bull **HPS:** Scurred
{CHB,DLE,HYF,IEF} (P43595083) (EMBRYO)
CALVED: Sep. 30, 2014 **TATTOO RE:** B716 **LE:** **REGISTRY NUMBER:** 43595083
BREEDER: KNOLL CREST FARM, RED HOUSE VA **OWNER:** KNOLL CREST FARM, RED HOUSE VA
JOE A WAGGONER LLC, CARTHAGE MS

EPD VALUES	CE EPD	BW EPD	WW EPD	YW EPD	DMI EPD	SC EPD	SCF EPD	MM EPD	MG EPD	HCE EPD	MCV EPD	UDDR EPD	TEAT EPD	CW EPD	FAT EPD	REA EPD	MARB EPD	8MI EPD	BII EPD	CHB EPD
ANIMAL	+10.7 (.53)	+0.1 (.74)	+63 (.57)	+93 (.58)	+0.5 (.18)	+1.5 (.47)	+21.0 (.32)	+35 (.28)	+66 (-)	+5.1 (.30)	+37 (.38)	+1.50 (.49)	+1.70 (.50)	+86 (.31)	+0.029 (.36)	+0.74 (.30)	+0.34 (.32)	+5.444 (-)	+5.540 (-)	+5.124 (-)
SIRE	+12.1 (.80)	-2.6 (.94)	+49 (.91)	+68 (.91)	-0.1 (.27)	+1.7 (.85)	-20.2 (.85)	+49 (.84)	+73 (-)	+6.3 (.77)	+5 (.76)	+1.40 (.87)	+1.60 (.89)	+66 (.54)	+0.059 (.54)	+0.50 (.50)	+0.33 (.54)	+5.917 (-)	+5.560 (-)	+5.104 (-)
DAM	+9.3 (.53)	+0.3 (.71)	+53 (.65)	+79 (.64)	+0.1 (.27)	+1.2 (.52)	+21.9 (.79)	+20 (.47)	+47 (-)	+3.5 (.42)	+64 (.53)	+1.60 (.64)	+1.70 (.66)	+76 (.40)	-0.011 (.46)	+0.82 (.39)	+0.19 (.41)	+5.452 (-)	+5.528 (-)	+5.121 (-)

CL L DOMINO 9126 (SOD,DLE,IEF) (41113378)
UPS DOMINO 3027 (SOD,DLE,HYF,IEF,MSUDF) (42426386)
NPS MISS DIAMOND 1353 (DLE,HYF,IEF,MSUDF) (42181624)
 Sire: CHURCHILL SENSATION 028X (SOD,DLE,HYF,IEF) (43092364)
GH BAMBO 2298 (CHB,SOD,DLE,HYF,IEF) (42651231)
CHURCHILL LADY 72071 ET (DLE,HYF,IEF) (42856776)
CL L DOMINETTE 301N (DLE,HYF,IEF) (42285227)
 Animal: KCF BENNETT DEVOUT B716 ET (CHB,DLE,HYF,IEF) (P43595083)
BAR JZ TRADITION 434V (SOD,DLE,HYF,IEF) (423143259)
REBEFF SCHU-LAR PROFICIENT M093 (SOD,DLE,HYF,IEF,MSUDF) (P42444860)
GERBER 117P DIXIE 009K (DLE,HYF,IEF) (P42068219)
 Dam: KCF MISS PROFICIENT U201 (DLE,HYF,IEF,MSUDF) (P42903703)
FELTONS DOMINO 774 (SOD,DLE,HYF,IEF) (P23864055)
KCF MISS 774 (82) (P42174245)
KCF MISS 8020 D170 (DOD) (P23825211)

	INDIVIDUAL PERFORMANCE	PROGENY AVERAGES	
		NUMBER	AVERAGES
Animal Daughters: - Calves: - Ratio: -	Birth Wt.	89	99.6 %
	Weaning Wt.	37	102.0 %
	Yearling Wt.	28	100.0 %
	Yearling Ht.	6.1 Frame	5.4 Frame
	Yr. Sc. Cir.	38.5 Cm.	35.2 Cm.
	Fat Depth	150.0 %	95.0 %
	Ribeye Area	100.0 %	102.3 %
	IMF	116.0 %	100.9 %
SIRE Daughters: 758 Calves: 1507 Ratio: 103.3	Birth Wt.	3949	96.3 %
	Weaning Wt.	3564	100.0 %
	Yearling Wt.	2234	98.6 %
	Yearling Ht.	458	6.0 Frame
	Yr. Sc. Cir.	694	36.9 Cm.
	Fat Depth	1663	102.6 %
	Ribeye Area	1662	98.9 %
	IMF	1663	100.1 %
DAM	Birth Wt.	4	97.0 %
	Weaning Wt.	4	108.3 %
	Yearling Wt.	3	111.0 %
	Yearling Ht.	34	5.9 Frame
	Yr. Sc. Cir.	36	34.6 Cm.
	Fat Depth	56	100.9 %
	Ribeye Area	56	105.5 %
	IMF	56	94.4 %



PERFORMANCE AS OF: 07/16/19

[Signature]
 SECRETARY, AMERICAN HEREFORD ASSOCIATION

AMERICAN HEREFORD ASSOCIATION

Box 014059, Kansas City, Missouri 64101

PERFORMANCE PEDIGREE

NAME: 6D NEVADA 713 (DLF,HYF,IEF) (P43862246) **SEX:** Bull **HPS:** Polled
CALVED: Feb. 08, 2017 **TATTOO RE:** 713 **LE:** 713 **REGISTRY NUMBER:** 43862246
BREEDER: 6D LAND & CATTLE, FALLON NV **OWNER:** JOE A WAGGONER LLC, CARTHAGE MS
R&R FARMS, SAN JOSE CA
6D LAND & CATTLE, FALLON NV

EPD VALUES	CE EPD	BW EPD	WW EPD	YW EPD	DMI EPD	SC EPD	SCF EPD	MM EPD	MG EPD	MCE EPD	MCW EPD	UDDR EPD	TEAT EPD	CW EPD	FAT EPD	REA EPD	MARB EPD	BMI EPD	BIT EPD	CHB EPD
ANIMAL	+6.8 (.35)	+2.7 (.46)	+63 (.90)	+111 (.41)	10.3 (.14)	+1.3 (.30)	+20.7 (.10)	+24 (.13)	+55 (-)	+2.7 (.12)	+109 (.26)	+1.30 (.35)	+1.30 (.35)	+103 (.20)	+0.029 (.24)	+1.18 (.20)	+0.28 (.21)	+5.479 (-)	+5.569 (-)	+5.164 (-)
SIRE	+1.2 (.45)	+5.0 (.62)	+69 (.72)	+119 (.71)	+0.2 (.16)	+2.3 (.56)	+20.7 (.10)	+18 (.30)	+52 (-)	-0.7 (.29)	+110 (.41)	+1.40 (.50)	-1.40 (.52)	+82 (.40)	+0.059 (.16)	+0.83 (.39)	+0.94 (.42)	+5.461 (-)	+5.569 (-)	+5.134 (-)
DAM	+13.1 (.34)	+1.2 (.48)	+49 (.42)	+78 (.44)	+0.4 (.14)	+0.4 (.29)	+20.7 (.17)	+29 (.25)	-54 (-)	+4.5 (.20)	+88 (.35)	+1.30 (.42)	+1.40 (.49)	-73 (.20)	+0.009 (.25)	+0.68 (.20)	+0.21 (.21)	+5.418 (-)	+5.482 (-)	+5.110 (-)

MSU TCF REVOLUTION 4R (SOD,CHB,DLF,HYF,IEF) (P42593689)
 KCF BENNETT REVOLUTION X51 (CHB,SOD,DLF,HYF,IEF) (P43081356)
 KCF MISS PROFICIENT U201 (DLF,HYF,IEF,MSUDF) (P42903203)
 Sire: EFBEEF RESOLUTE CEO (CHB,DLF,HYF,IEF,MSUDF) (P43591829)
 R&R PRIME CUT G376 ET (CHB,DLF,HYF,IEF,MSUDF) (P42763764)
EFBEEF G376 KATE W484 (DLF,HYF,IEF,MSUDF) (P43032139)
EFBEEF G825 KATE R428 (P42635106)
 Animal: 6D NEVADA 713 (DLF,HYF,IEF) (P43862246)
 HH ADVANCE 3196N (CHB,SOD,DLF,IEF) (42320242)
 GO 3196 ADVANCE S109 (SOD,DLF,HYF,IEF) (42628172)
 GO MS 116 EXCEL N88 (DLF,IEF) (42378038)
 Dam: R&R 5109 LEANNE 1206 3016 (DOD,DLF,HYF,IEF) (43418228)
 CRR ABOUT TIME 743 (SOD,DLF,HYF,IEF) (P42797564)
R&R 743 LEANNE 9006 1206ET (43231400)
RSR LEANNE 9006 (P42107458)

	INDIVIDUAL PERFORMANCE		PROGENY NUMBER AVERAGES	
Animal Daughters: - Calves: - Ratio: -	Birth Wt.	94.0 %		
	Weaning Wt.	106.0 %		
	Yearling Wt.	104.0 %		
	Yearling Ht.			
	Yr. Sc. Cir.			
	Fat Depth	112.0 %		
	Ribeye Area	129.0 %		
	IMF	89.0 %		
SIRE Daughters: - Calves: - Ratio: -	Birth Wt.	109.0 %	314	102.5 %
	Weaning Wt.	128.0 %	280	101.6 %
	Yearling Wt.	127.0 %	195	101.1 %
	Yearling Ht.	5.8 Frame	25	5.0 Frame
	Yr. Sc. Cir.	41.0 Cm.	35	37.1 Cm.
	Fat Depth	120.0 %	199	104.3 %
	Ribeye Area	138.0 %	199	101.8 %
	IMF	78.0 %	199	103.9 %
DAM	Birth Wt.	100.0 %	4	105.5 %
	Weaning Wt.	110.0 %	4	106.8 %
	Yearling Wt.	113.0 %	3	102.0 %
	Yearling Ht.			
	Yr. Sc. Cir.			
	Fat Depth	97.0 %	3	102.3 %
	Ribeye Area	107.0 %	3	110.0 %
	IMF	86.0 %	3	91.0 %



PERFORMANCE AS OF: 07/16/19

John A. Waggoner
 SECRETARY, AMERICAN HEREFORD ASSOCIATION

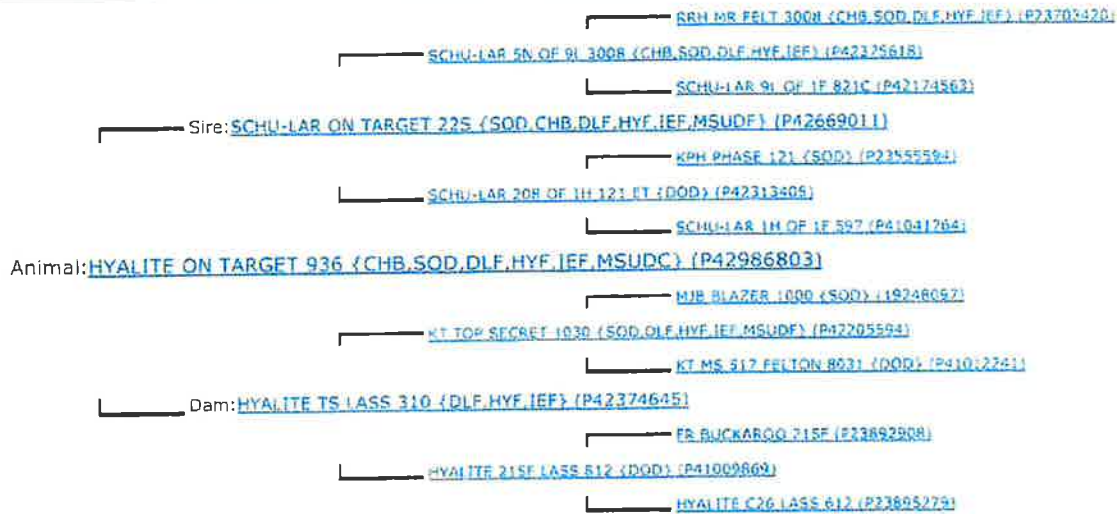
AMERICAN HEREFORD ASSOCIATION

Box 014059, Kansas City, Missouri 64101

PERFORMANCE PEDIGREE

NAME: HYALITE ON TARGET 936 **SEX:** Bull **HPS:** Polled
{CHB,SOD,DLE,HYF,IEF,MSUDC}
CALVED: Mar. 21, 2009 **TATTOO RE:** 936 **LE:** 936 **REGISTRY NUMBER:** 42986803
BREEDER: LINTON POLLED HEREFORDS, FRONT ROYAL VA **OWNER:** LINTON POLLED HEREFORDS, FRONT ROYAL VA
RAUSCH HEREFORDS, HOVEN SD

EPD VALUES	CE EPD	BW EPD	WW EPD	YW EPD	DMI EPD	SC EPD	SCF EPD	HM EPD	MG EPD	HCE EPD	MCW EPD	UDDR EPD	TEAT EPD	CW EPD	FAT EPD	REA EPD	MARB EPD	RMI EPD	RIF EPD	CHB EPD
ANIMAL	+5.9 (.64)	+3.5 (.92)	+71 (.86)	+113 (.87)	+0.3 (.20)	+1.8 (.79)	+17.4 (.49)	+28 (.73)	+64 (-)	+9.3 (.66)	+106 (.72)	+1.40 (.84)	+1.30 (.84)	+85 (.38)	-0.039 (.47)	+0.44 (.37)	+0.32 (.38)	+5.401 (-)	+5.504 (-)	+5.131 (-)
SIRE	+6.7 (.66)	+2.8 (.89)	+68 (.84)	+117 (.84)	+0.3 (.36)	+2.2 (.76)	+19.5 (.52)	+19 (.72)	+53 (-)	+10.6 (.61)	+121 (.73)	+1.20 (.82)	+1.10 (.83)	+68 (.45)	-0.001 (.51)	+0.13 (.45)	+0.34 (.25)	+5.411 (-)	+5.514 (-)	+5.114 (-)
DAM	+3.5 (.43)	+0.9 (.56)	+45 (.50)	+74 (.52)	+0.1 (.05)	+1.0 (.46)	+17.7 (.29)	+25 (.44)	+48 (-)	+6.8 (.34)	+79 (.59)	+1.50 (.61)	+1.50 (.61)	+62 (.23)	+0.019 (.29)	+0.07 (.23)	+0.34 (.26)	-5.371 (-)	+5.450 (-)	+5.98 (-)



		INDIVIDUAL PERFORMANCE		PROGENY	
				NUMBER	AVERAGES
Animal	Birth Wt.	106.0 %		1235	101.3 %
	Weaning Wt.	111.0 %		1081	102.2 %
	Yearling Wt.	112.0 %		742	100.4 %
	Yearling Ht.			248	5.4 Frame
	Yr. Sc. Cir.	39.0 Cm.		336	36.0 Cm.
	Fat Depth	116.0 %		696	102.2 %
	Ribeye Area	115.0 %		695	100.8 %
	IMF	78.0 %		694	96.8 %
SIRE	Birth Wt.	99.0 %		717	100.8 %
	Weaning Wt.	115.0 %		667	101.7 %
	Yearling Wt.	108.0 %		497	101.7 %
	Yearling Ht.	6.1 Frame		225	5.5 Frame
	Yr. Sc. Cir.	37.3 Cm.		223	37.3 Cm.
	Fat Depth	87.0 %		389	97.4 %
	Ribeye Area	111.0 %		389	101.2 %
	IMF	101.0 %		388	98.6 %
DAM	Birth Wt.			15	99.5 %
	Weaning Wt.			14	100.8 %
	Yearling Wt.			12	99.4 %
	Yearling Ht.			5	4.0 Frame
	Yr. Sc. Cir.			11	34.7 Cm.
	Fat Depth			17	106.9 %
	Ribeye Area			17	103.1 %
	IMF			17	98.8 %



PERFORMANCE AS OF: 07/16/19

SECRETARY AMERICAN HEREFORD ASSOCIATION

AMERICAN HEREFORD ASSOCIATION
 Box 014059, Kansas City, Missouri 64101
PERFORMANCE PEDIGREE

NAME: R LANDMARK 4386 {DLF,HYF,IEF,MSUDC} **SEX:** Bull **HPS:** Polled
(P43711605)

CALVED: Mar. 20, 2016 **TATTOO RE:** 4386 **LE:** **REGISTRY NUMBER:** 43711605
BREEDER: RAUSCH HEREFORDS, HOVEN SD **OWNER:** KNOLL CREST FARM, RED HOUSE VA
RAUSCH HEREFORDS, HOVEN SD

EPD VALUES	CE EPD	DW EPD	WW EPD	YW EPD	DMI EPD	SC EPD	SCF EPD	MM EPD	MG EPD	NCE EPD	MCV EPD	UDDR EPD	TCAT EPD	CW EPD	FAT EPD	REA EPD	MARB EPD	BM EPD	DIL EPD	CHD EPD
ANIMAL	+11.4 (.37)	+0.9 (.66)	+77 (.54)	+123 (.54)	+0.9 (.17)	+1.8 (.39)	+20.5 (.16)	+37 (.22)	+76 (-)	+11.2 (.20)	+121 (.31)	+1.50 (.39)	+1.50 (.22)	+104 (.22)	+0.059 (.38)	+0.78 (.22)	+0.24 (.22)	+5.453 (-)	+5.556 (-)	+5.142 (-)
SIRE	+5.9 (.64)	+3.5 (.92)	+71 (.86)	+113 (.87)	+0.3 (.20)	+1.8 (.79)	+17.4 (.49)	+28 (.73)	+64 (-)	+9.3 (.66)	-106 (.72)	+1.40 (.83)	-1.30 (.84)	+85 (.38)	+0.039 (.47)	-0.44 (.37)	+0.32 (.38)	+5.401 (-)	+5.504 (-)	+5.131 (-)
DAM	+6.3 (.37)	+1.8 (.56)	+74 (.48)	+125 (.50)	+1.1 (.16)	+1.5 (.35)	+23.7 (.12)	+46 (.28)	+84 (-)	+7.6 (.71)	+130 (.27)	+1.40 (.44)	+1.40 (.22)	+101 (.27)	+0.009 (.27)	+0.85 (.21)	+0.03 (.23)	+5.488 (-)	+5.376 (-)	+5.138 (-)

SCHULAR SN OF RL 3008 {CHB,SOD,DLF,HYF,IEF} (P42375618)
SCHULAR ON TARGET 225 {SOD,CHB,DLF,HYF,IEF,MSUDF} (P42669011)
SCHULAR 208 OF IH 121 ET {DOD} (P42313405)
 Sire: HYALITE ON TARGET 936 {CHB,SOD,DLF,HYF,IEF,MSUDC} (P42986803)
KT TOP SECRET 1030 {SOD,DLF,HYF,IEF,MSUDF} (P42205594)
HYALITE TS LASS 310 {DLF,HYF,IEF} (P42374645)
HYALITE 215F LASS #12 {DOD} (P41009869)
 Animal: R LANDMARK 4386 {DLF,HYF,IEF,MSUDC} (P43711605)
MSU TCF REVOLUTION 4R {SOD,CHB,DLF,HYF,IEF} (P42493655)
R REVOLUTION #510 {CHB,SOD,DLF,HYF,IEF} (P43102199)
R MISS ADVANCE 406 {DOD,DLF,IEF} (42215622)
 Dam: R MISS REVOLUTION 3032 {DOD,DLF,HYF,IEF,MSUDF} (P43307313)
R PUCKSTER 2586 {SOD,DLF,IEF} (42215855)
R MISS PUCKSTER 678 {DOD} (P42914262)
R MISS DOMINO 1736 {P42715502}

		INDIVIDUAL PERFORMANCE		PROGENY AVERAGES	
			NUMBER		
Animal	Birth Wt.	96.0 %	58	96.9 %	
	Weaning Wt.	120.0 %	32	102.5 %	
	Yearling Wt.	117.0 %	14	100.0 %	
	Yearling Ht.				
	Yr. Sc. Cir.		4	35.0 Cm.	
	Fat Depth	148.0 %	14	108.0 %	
	Ribeye Area	112.0 %	14	106.2 %	
	IMF	93.0 %	14	97.1 %	
SIRE	Birth Wt.	106.0 %	1235	101.3 %	
	Weaning Wt.	111.0 %	1081	102.2 %	
	Yearling Wt.	112.0 %	742	100.4 %	
	Yearling Ht.		248	5.4 Frame	
	Yr. Sc. Cir.	39.0 Cm.	336	36.0 Cm.	
	Fat Depth	116.0 %	596	102.2 %	
	Ribeye Area	115.0 %	695	100.8 %	
	IMF	78.0 %	694	96.8 %	
DAM	Birth Wt.	98.0 %	5	100.2 %	
	Weaning Wt.	114.0 %	4	113.8 %	
	Yearling Wt.	103.0 %	3	109.3 %	
	Yearling Ht.				
	Yr. Sc. Cir.		1	37.1 Cm.	
	Fat Depth	77.0 %	3	107.3 %	
	Ribeye Area	106.0 %	3	109.7 %	
	IMF		3	101.0 %	



PERFORMANCE AS OF: 07/16/19

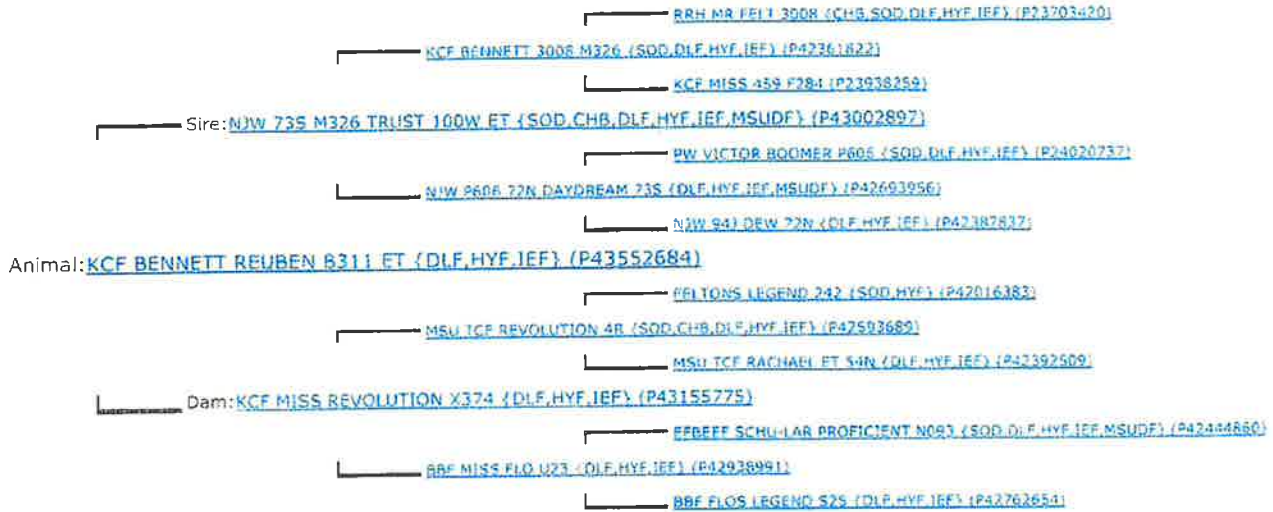
John H. Smith
 SECRETARY, AMERICAN HEREFORD ASSOCIATION

AMERICAN HEREFORD ASSOCIATION
 Box 014059, Kansas City, Missouri 64101
PERFORMANCE PEDIGREE

NAME: KCF BENNETT REUBEN B311 ET
{DLF,HYF,IEF} (P43552684) (FMBRYO)
CALVED: Sep. 22, 2014 **TATTOO RE:** B311
BREEDER: KNOLL CREST FARM, RED HOUSE VA

SEX: Bull **HPS:** Polled
LE: **REGISTRY NUMBER:** 43552684
OWNER: KNOLL CREST FARM, RED HOUSE VA
JOE A WAGGONER LLC, CARTHAGE MS

EPD VALUES	CE EPD	BW EPD	WW EPD	YW EPD	DMI EPD	SC EPD	SCF EPD	MM EPD	MG EPD	MCE EPD	MCW EPD	UDDR EPD	TEAT EPD	CV EPD	FAT EPD	REA EPD	MARB EPD	RHI EPD	RFI EPD	CHB EPD
ANIMAL	+4.4 (.39)	+2.5 (.45)	+65 (.41)	+108 (.42)	+0.5 (.14)	+1.1 (.36)	+24.0 (.20)	+34 (.24)	+66 (-)	+3.9 (.33)	+143 (.36)	+1.30 (.42)	+1.30 (.42)	+90 (.25)	-0.031 (.30)	+0.87 (.24)	-0.21 (.26)	+5.510 (-)	+5.600 (-)	+5.143 (-)
SIRE	+0.7 (.71)	+3.6 (.84)	+66 (.91)	+115 (.90)	+0.2 (.23)	+1.5 (.82)	-24.5 (.68)	+36 (.84)	+69 (-)	+4.2 (.79)	+148 (.80)	+1.30 (.88)	+1.20 (.89)	+85 (.48)	-0.051 (.53)	+0.60 (.47)	-0.16 (.42)	+5.520 (-)	+5.608 (-)	+5.147 (-)
DAM	+8.7 (.46)	+0.2 (.60)	+59 (.51)	+95 (.53)	+0.7 (.16)	+0.9 (.41)	-23.6 (.24)	+31 (.36)	+60 (-)	+3.9 (.31)	+77 (.46)	+1.60 (.60)	+1.60 (.58)	+89 (.30)	+0.049 (.36)	+0.85 (.30)	+0.29 (.32)	+5.482 (-)	+5.573 (-)	+5.125 (-)



		INDIVIDUAL PERFORMANCE		PROGENY AVERAGES		
		NUMBER	AVERAGES	NUMBER	AVERAGES	
Animal	Birth Wt.					
	Weaning Wt.					
	Yearling Wt.					
	Daughters: -	Yearling Ht.	6.0	Frame		
	Calves: -	Yr. Sc. Cir.	34.3	Cm.		
	Ratio: -	Fat Depth	67.0	%		
		Ribeye Area	116.0	%		
IMF		65.0	%			
SIRE	Birth Wt.			2914	100.5 %	
	Weaning Wt.			2527	101.5 %	
	Yearling Wt.			1249	101.5 %	
	Daughters: 871	Yearling Ht.			314	5.5 Frame
		Yr. Sc. Cir.			452	36.4 Cm.
	Calves: 1726	Fat Depth			1010	96.0 %
		Ribeye Area			1012	102.6 %
Ratio: 102.3	IMF			1013	98.3 %	
	DAM	Birth Wt.			92.0 %	6
Weaning Wt.				108.0 %	5	
Yearling Wt.				110.0 %	4	
Yearling Ht.					12	5.6 Frame
Yr. Sc. Cir.					11	34.9 Cm.
Fat Depth				76.0 %	19	93.2 %
Ribeye Area				135.0 %	19	108.4 %
IMF			102.0 %	19	91.4 %	



PERFORMANCE AS OF: 07/16/19

SECRETARY, AMERICAN HEREFORD ASSOCIATION

AMERICAN HEREFORD ASSOCIATION

Box 014059, Kansas City, Missouri 64101

PERFORMANCE PEDIGREE

NAME: KCF BENNETT ENCORE Z311 ET
<CHB,DLE,HYF,IEF,MSUDF> (P43387256)

SEX: Bull HPS: Polled

CALVED: Sep. 21, 2012 TATTOO RE: Z311

LE: REGISTRY NUMBER: 43387256

BREEDER: KNOLL CREST FARM, RED HOUSE VA

OWNER: KNOLL CREST FARM, RED HOUSE VA
CANDY MEADOW FARMS INC., LEXINGTON, TN
 MCCOY CATTLE COMPANY LTD

EPD VALUES	CE EPD	BW EPD	WW EPD	YW EPD	DMI EPD	SC EPD	SCF EPD	MM EPD	MG EPD	MCE EPD	MCW EPD	UDDR EPD	TEAT EPD	CW EPD	FAT EPD	REA EPD	MARB EPD	BMI EPD	BIT EPD	CHB EPD
ANIMAL	+1.6 (.72)	+3.5 (.92)	+78 (.87)	+131 (.85)	+0.3 (.15)	+1.4 (.76)	+20.6 (.11)	+31 (.63)	+70 (-)	+5.5 (.65)	+127 (.61)	-1.20 (.81)	+1.10 (.83)	+78 (.40)	+0.068 (.47)	+0.20 (.40)	+0.63 (.41)	+5.458 (-)	+5.592 (-)	+5.125 (-)
SIRE	+7.3 (.66)	-2.8 (.89)	+68 (.64)	+116 (.84)	+0.3 (.36)	+2.3 (.76)	+19.3 (.52)	+19 (.73)	+53 (-)	+10.1 (.62)	+122 (.70)	+1.30 (.82)	+1.10 (.64)	+68 (.45)	-0.012 (.52)	+0.11 (.45)	+0.32 (.45)	+5.108 (-)	+5.509 (-)	+5.114 (-)
DAM	-0.1 (.48)	+3.0 (.61)	+73 (.55)	+113 (.95)	+0.4 (.16)	+1.0 (.49)	+22.8 (.27)	+27 (.40)	+63 (-)	+1.3 (.38)	+112 (.49)	+1.20 (.61)	+1.10 (.61)	+89 (.32)	+0.048 (.37)	+0.66 (.31)	+0.15 (.34)	+5.492 (-)	+5.607 (-)	+5.132 (-)

─── RRH MR FELT 3008 <CHB,SOD,DLE,HYF,IEF> (P23703420)
 ─── SCHU-LAR 5N OF 9L 300R <CHB,SOD,DLE,HYF,IEF> (P42375618)
 ─── SCHU-LAR 9L OF 1F 821C (P42174563)
 Sire: SCHU-LAR ON TARGET 22S <SOD,CHB,DLE,HYF,IEF,MSUDF> (P42669011)
 ─── KPH PHASE 121 <SOD> (P2355594)
 ─── SCHU-LAR 208 OF 1H 121 ET <DOD> (P42313405)
 ─── SCHU-LAR 1H OF 1F 597 (P41041764)
 Animal: KCF BENNETT ENCORE Z311 ET <CHB,DLE,HYF,IEF,MSUDF> (P43387256)
 ─── FELTONS LEGEND 242 <SOD,HYF> (P42016363)
 ─── MSU TCF REVOLUTION 4R <SOD,CHB,DLE,HYF,IEF> (P42583669)
 ─── MSU TCF RACHAEL ET 54N <DLE,HYF,IEF> (P42392509)
 Dam: KCF MISS REVOLUTION X338 ET <DLE,HYF,IEF> (P43155704)
 ─── JW 528 VICTOR 728 (P24029789)
 ─── JW 718 VICTORIA 910E <DOD,DLE,HYF,IEF> (P42021806)
 ─── JW 031 VICTORIA 7156 (P24029772)

	INDIVIDUAL PERFORMANCE		PROGENY	
			NUMBER	AVERAGES
Animal Daughters: 216 Calves: 252 Ratio: 101.3	Birth Wt.		1484	101.3 %
	Weaning Wt.		1318	102.6 %
	Yearling Wt.		814	102.5 %
	Yearling Ht.	6.1 Frame	251	5.6 Frame
	Yr. Sc. Cir.	36.2 Cm.	313	35.7 Cm.
	Fat Depth	112.0 %	694	103.8 %
	Ribeye Area	93.0 %	694	99.4 %
	IMF	159.0 %	692	105.8 %
SIRE Daughters: 221 Calves: 570 Ratio: 99.8	Birth Wt.	99.0 %	717	100.8 %
	Weaning Wt.	115.0 %	667	101.7 %
	Yearling Wt.	108.0 %	497	101.7 %
	Yearling Ht.	6.1 Frame	225	5.5 Frame
	Yr. Sc. Cir.	37.3 Cm.	223	37.3 Cm.
	Fat Depth	87.0 %	399	97.4 %
	Ribeye Area	111.0 %	399	101.2 %
	IMF	101.0 %	388	98.6 %
DAM	Birth Wt.		6	103.7 %
	Weaning Wt.		2	97.0 %
	Yearling Wt.		1	112.0 %
	Yearling Ht.		14	6.2 Frame
	Yr. Sc. Cir.		14	34.3 Cm.
	Fat Depth	95.0 %	28	102.5 %
	Ribeye Area	103.0 %	28	101.8 %
	IMF	150.0 %	28	110.3 %



PERFORMANCE AS OF: 08/23/19

John H. ...
 SECRETARY, AMERICAN HEREFORD ASSOCIATION

PE Sires

AMERICAN HEREFORD ASSOCIATION

Box 014059, Kansas City, Missouri 64101

PERFORMANCE PEDIGREE

NAME: WHITEHAWK 225 BEEFMAKER 597B **SEX:** Bull **HPS:** Polled
{DLF,HYF,IEF,MSUDF} (P43460362)
CALVED: Jan. 07, 2014 **TATTOO RE:** 597B **LE:** 597B **REGISTRY NUMBER:** 43460362
BREEDER: GARY R HEDRICK, MARIETTA GA **OWNER:** JOE A WAGGONER LLC, CARTHAGE MS
GARY R HEDRICK, MARIETTA GA
 JONATHAN SIMS

EPD VALUES	CE EPD	BW EPD	WW EPD	YW EPD	DMI EPD	SC EPD	SCF EPD	NM EPD	MG EPD	MCE EPD	MW EPD	UDDR EPD	TEAT EPD	KW EPD	FAT EPD	REA EPD	MARB EPD	BMI EPD	BII EPD	CHB EPD
ANIMAL	+2.5 (.41)	+1.3 (.67)	+61 (.53)	+103 (.54)	-0.1 (.17)	+1.8 (.46)	+22.0 (.12)	+30 (.19)	+60 (.1)	+4.9 (.23)	+91 (.33)	+1.40 (.46)	-1.30 (.47)	+88 (.24)	+0.029 (.29)	+0.84 (.24)	-0.21 (.26)	+5.480 (.1)	+5.566 (.1)	+5.145 (.1)
SIRE	+0.2 (.44)	+3.6 (.76)	+79 (.66)	+129 (.67)	+0.2 (.11)	+1.3 (.56)	+24.1 (.18)	+34 (.38)	+74 (.1)	+5.2 (.33)	+114 (.46)	+1.40 (.62)	+1.30 (.64)	+100 (.33)	+0.039 (.32)	+1.00 (.34)	-0.23 (.24)	+5.529 (.1)	+5.635 (.1)	+5.160 (.1)
DAM	+1.1 (.39)	+2.5 (.54)	+54 (.47)	+97 (.50)	+0.1 (.16)	+2.1 (.40)	+19.6 (.17)	+26 (.30)	+53 (.1)	+2.7 (.26)	+118 (.45)	+1.30 (.55)	+1.20 (.55)	+71 (.27)	+0.029 (.32)	+0.21 (.26)	+0.36 (.28)	+5.422 (.1)	+5.512 (.1)	+5.116 (.1)

MSU TCF REVOLUTION 4R {SOD,CHB,DLF,HYF,IEF} (P42593689)
 WHITEHAWK 4R REVOLUTION 2328 {SOD,CHB,DLF,IEF} (P42913925)
 R MISS ADVANCE 406 {DOD,DLF,IEF} (42715622)
 Sire: WHITEHAWK 2328 BEEFMKR 225YET {CHB,DLF,HYF,IEF} (P43264326)
 PW VICTOR BOOMER P606 {SOD,DLF,HYF,IEF} (P24020732)
 BBF BECKYS MARK P606 532 {DOD,DLF,HYF,IEF} (P42762666)
 VPI POETRY DANCER H830 (P41103696)
 Animal: WHITEHAWK 225 BEEFMAKER 597B {DLF,HYF,IEF,MSUDF} (P43460362)
 KCF BENNETT 3008 M326 {SOD,DLF,HYF,IEF} (P42361822)
 KCF BENNETT M326 S342 {CHB,DLF,HYF,IEF} (P42263176)
 KCF MISS M106 P433 {DLF,HYF,IEF} (P42570158)
 Dam: WHITEHAWK 342 BEEFMAID 169Y {DLF,HYF,IEF} (P43166702)
 CL 1 DOMINO 9126 IET {SOD,DLF,IEF} (41113279)
 KCF MISS 9126 T18 {DOD,DLF,HYF,IEF} (P42805887)
 KCF MISS 440 R231 {DLF,HYF,IEF} (P42573552)

		INDIVIDUAL PERFORMANCE		PROGENY	
				NUMBER	AVERAGES
Animal	Birth Wt.	98.0 %		49	97.8 %
	Weaning Wt.	100.0 %		30	97.9 %
	Yearling Wt.	101.0 %		22	97.4 %
	Yearling Ht.	6.7 Frame		13	5.4 Frame
	Yr. Sc. Cir.	41.6 Cm.		9	37.6 Cm.
	Fat Depth	111.0 %		21	102.6 %
	Ribeye Area	105.0 %		21	98.0 %
	IMF	102.0 %		21	95.3 %
SIRE	Birth Wt.	95.0 %		149	101.1 %
	Weaning Wt.	111.0 %		128	101.5 %
	Yearling Wt.	106.0 %		106	101.4 %
	Yearling Ht.	6.3 Frame		85	5.5 Frame
	Yr. Sc. Cir.	37.9 Cm.		56	36.6 Cm.
	Fat Depth	116.0 %		122	104.4 %
	Ribeye Area	119.0 %		122	102.6 %
	IMF	97.0 %		122	103.7 %
DAM	Birth Wt.	104.0 %		6	98.7 %
	Weaning Wt.	107.0 %		5	99.4 %
	Yearling Wt.	109.0 %		5	103.6 %
	Yearling Ht.			3	5.8 Frame
	Yr. Sc. Cir.			2	39.3 Cm.
	Fat Depth	142.0 %		11	103.5 %
	Ribeye Area	113.0 %		11	98.1 %
	IMF	119.0 %		11	101.5 %



PERFORMANCE AS OF: 07/16/19

Scott A. ...
 SECRETARY, AMERICAN HEREFORD ASSOCIATION

AMERICAN HEREFORD ASSOCIATION

Box 014059, Kansas City, Missouri 64101

PERFORMANCE PEDIGREE

NAME: EFBEEF A250 TESTED E018 (DLF,HYF,IEF) **SEX:** Bull **HPS:** Polled
(P43777074)
CALVED: Mar. 13, 2017 **TATTOO RE:** PEF **LE:** E018 **REGISTRY NUMBER:** 43777074
BREEDER: ELLIS FARMS, CHRISMAN II **OWNER:** JOE A WAGGONER LLC, CARTHAGE MS
ELLIS FARMS, CHRISMAN II

EPD VALUES	CE EPD	BW EPD	WW EPD	YW EPD	DMI EPD	SC EPD	SCF EPD	FIH EPD	MG EPD	HCE EPD	MCW EPD	UDDR EPD	TEAT EPD	CW EPD	FAT EPD	REA EPD	MARD EPD	BMI EPD	BII EPD	CH9 EPD
ANIMAL	+6.5 (.40)	+2.3 (.50)	+7.0 (.42)	+11.1 (.42)	+0.6 (.14)	+1.3 (.34)	+20.2 (.13)	+21 (.17)	+56 (-)	+5.1 (.20)	+90 (.31)	+1.60 (.39)	+1.70 (.39)	+86 (.28)	+0.059 (.21)	+0.67 (.28)	+0.52 (.29)	+5.446 (-)	+5.561 (-)	+5.126 (-)
SIRE	+11.1 (.61)	-0.4 (.87)	+6.1 (.78)	+9.4 (.78)	+0.5 (.61)	+1.2 (.58)	+17.4 (.23)	+25 (.34)	+57 (-)	+5.8 (.36)	+62 (.44)	+1.60 (.61)	+1.50 (.60)	+75 (.65)	+0.089 (.63)	-0.30 (.63)	+0.59 (.63)	+5.383 (-)	+5.498 (-)	+5.104 (-)
DAM	+4.6 (.38)	+2.5 (.47)	+6.6 (.42)	+10.6 (.42)	+0.5 (.14)	+1.1 (.36)	+22.9 (.17)	+17 (.22)	+50 (-)	+5.8 (.24)	+110 (.40)	+1.40 (.48)	+1.50 (.49)	+84 (.27)	+0.049 (.29)	+0.71 (.26)	+0.42 (.27)	+5.482 (-)	+5.589 (-)	+5.125 (-)

EFBEEF FOREMOST U208 (DLF,HYF,IEF,MSUDF) (P42806690)
EFBEEF TEL U208 TESTED X651 ET (DLF,HYF,IEF) (P43391736)
EFBEEF P606 MABEL R-115 (P42635108)
 Sire: EFBEEF X651 TESTED A250 (DLF,HYF,IEF,MSUDF) (P43440096)
R&R PRIME CUT 6378 ET (CHB,DLF,HYF,IEF,MSUDF) (P42763264)
EFBEEF 6378 KATE W-184 (DLF,HYF,IEF,MSUDF) (P43032138)
EFBEEF GR25 KATE R428 (P42635106)
 Animal: EFBEEF A250 TESTED E018 (DLF,HYF,IEF) (P43777074)
MSV TCF REVOLUTION 4R (SOD,CHB,DLF,HYF,IEF) (P42583689)
KCF BENNETT REVOLUTION X51 (CHB,SOD,DLF,HYF,IEF) (P43081556)
KCF MISS PROFICIENT U201 (DLF,HYF,IEF,MSUDF) (P42963703)
 Dam: G E MS X51 FELLISITY 506C ET (DLF,HYF,IEF,MSUDF) (P43600759)
EFBEEF FOREMOST U208 (DLF,HYF,IEF,MSUDF) (P42806690)
EFBEEF U208 FELLISITY 2011 (DLF,HYF,IEF) (P43286250)
EFBEEF N093 FELLISITY X651 ET (DLF,HYF,IEF) (P43081738)

	INDIVIDUAL PERFORMANCE		PROGENY NUMBER AVERAGES	
Animal Daughters: - Calves: - Ratio: -	Birth Wt.	101.0 %		
	Weaning Wt.	127.0 %		
	Yearling Wt.	116.0 %		
	Yearling Ht.			
	Yr. Sc. Cir.			
	Fat Depth	136.0 %		
	Ribeye Area	116.0 %		
	IMF	127.0 %		
SIRE Daughters: 12 Calves: 16 Ratio: 100.8	Birth Wt.	82.0 %	482	98.5 %
	Weaning Wt.	99.0 %	357	101.8 %
	Yearling Wt.	100.0 %	257	100.9 %
	Yearling Ht.	4.2 Frame	72	4.9 Frame
	Yr. Sc. Cir.	37.0 Cm.	37	36.3 Cm.
	Fat Depth	94.0 %	129	106.4 %
	Ribeye Area	101.0 %	129	100.5 %
	IMF	108.0 %	128	104.6 %
DAM	Birth Wt.		3	100.0 %
	Weaning Wt.		1	127.0 %
	Yearling Wt.		2	105.0 %
	Yearling Ht.	6.4 Frame		
	Yr. Sc. Cir.			
	Fat Depth	100.0 %	2	118.0 %
	Ribeye Area	100.0 %	2	105.0 %
	IMF	100.0 %	2	110.5 %



PERFORMANCE AS OF: 07/16/19

Scott R. ...
 SECRETARY, AMERICAN HEREFORD ASSOCIATION

AMERICAN HEREFORD ASSOCIATION

Box 014059, Kansas City, Missouri 64101

PERFORMANCE PEDIGREE

NAME: KCF BENNETT REUBEN B311 ET **SEX:** Bull **HPS:** Polled
{DLF,HYF,IEF} (P43552684) (EMBRYO)
CALVED: Sep. 22, 2014 **TATTOO RE:** B311 **LE:** **REGISTRY NUMBER:** 43552684
BREEDER: KNOLL CREST FARM, RED HOUSE VA **OWNER:** KNOLL CREST FARM, RED HOUSE VA
JOE A WAGGONER LLC, CARTHAGE MS

EPD VALUES	CE EPD	BW EPD	WW EPD	YW EPD	DMI EPD	SC EPD	SCF EPD	HM EPD	HG EPD	HCE EPD	MCV EPD	UDDR EPD	TEAT EPD	CW EPD	FAT EPD	REA EPD	MARB EPD	DMI EPD	BII EPD	CHB EPD
ANIMAL	+4.4 (.39)	+2.5 (.45)	+65 (.41)	+108 (.42)	+0.5 (.14)	+1.1 (.36)	+24.0 (.20)	+34 (.24)	+66 (-)	+3.9 (.23)	+143 (.36)	+1.30 (.42)	+1.30 (.42)	+90 (.25)	-0.031 (.30)	+0.87 (.24)	+0.21 (.26)	+5.510 (-)	+5.600 (-)	+5.143 (-)
SIRE	+0.7 (.71)	+3.6 (.94)	+66 (.91)	+115 (.90)	+0.2 (.23)	+1.5 (.62)	+24.5 (.68)	+36 (.84)	+69 (-)	+4.2 (.79)	+148 (.80)	+1.30 (.89)	+1.20 (.48)	+85 (.53)	-0.80 (.47)	+0.16 (.42)	+5.520 (-)	+5.608 (-)	+5.147 (-)	
DAM	+6.7 (.46)	+0.2 (.60)	+59 (.51)	+96 (.53)	+0.7 (.16)	+0.9 (.41)	+23.6 (.24)	+31 (.36)	+60 (-)	+3.9 (.31)	+77 (.46)	+1.60 (.56)	+1.60 (.30)	+89 (.30)	+0.049 (.36)	-0.65 (.32)	+0.29 (.32)	+5.482 (-)	+5.573 (-)	+5.125 (-)



	INDIVIDUAL PERFORMANCE		PROGENY	
			NUMBER	AVERAGES
Animal Daughters: - Calves: - Ratio: -	Birth Wt.			
	Weaning Wt.			
	Yearling Wt.			
	Yearling Ht.	6.0 Frame		
	Yr. Sc. Cir.	34.3 Cm.		
	Fat Depth	67.0 %		
	Ribeye Area	116.0 %		
	IMF	65.0 %		
SIRE Daughters: 871 Calves: 1726 Ratio: 102.3	Birth Wt.		2914	100.5 %
	Weaning Wt.		2527	101.5 %
	Yearling Wt.		1249	101.5 %
	Yearling Ht.		314	5.5 Frame
	Yr. Sc. Cir.	37.7 Cm.	452	36.4 Cm.
	Fat Depth	104.0 %	1010	96.0 %
	Ribeye Area	127.0 %	1012	102.5 %
	IMF	77.0 %	1013	98.3 %
DAM	Birth Wt.	92.0 %	6	97.7 %
	Weaning Wt.	108.0 %	5	114.0 %
	Yearling Wt.	110.0 %	4	110.8 %
	Yearling Ht.		12	5.6 Frame
	Yr. Sc. Cir.		11	34.9 Cm.
	Fat Depth	76.0 %	19	93.2 %
	Ribeye Area	135.0 %	19	108.4 %
	IMF	102.0 %	19	91.4 %



PERFORMANCE AS OF: 07/16/19

John W. Smith
 SECRETARY, AMERICAN HEREFORD ASSOCIATION

AMERICAN HEREFORD ASSOCIATION
 Box 014059, Kansas City, Missouri 64101
PERFORMANCE PEDIGREE

NAME: JW X651 TESTED 1740 **SEX:** Bull **HPS:** Polled
{DLF,HYF,IEF,MSUDF} (P43735530)
CALVED: Oct. 08, 2016 **TATTOO RE:** 1740 **LE:** 1740 **REGISTRY NUMBER:** 43735530
BREEDER: JOE A WAGGONER LLC, CARTHAGE MS **OWNER:** JOE A WAGGONER LLC, CARTHAGE MS

EPD VALUES	CE EPD	BW EPD	WW EPD	YW EPD	DMI EPD	SC EPD	SCF EPD	MM EPD	MG EPD	MCE EPD	MCW EPD	UDDR EPD	TEAT EPD	CW EPD	FAT EPD	REA EPD	MARB	BMI EPD	BII EPD	CHB EPD
ANIMAL	+10.8 (.41)	+0.3 (.49)	+69 (.42)	+111 (.44)	+0.9 (.14)	+0.8 (.40)	+20.2 (.15)	+26 (.21)	+61 (-)	+7.6 (.22)	+89 (.33)	+1.60 (.40)	+1.50 (.40)	+85 (.26)	+0.059 (.25)	+0.65 (.25)	+0.68 (.26)	+5.445 (-)	+5.570 (-)	+5.120 (-)
SIRE	+13.7 (.72)	-0.9 (.91)	+65 (.86)	+94 (.86)	+0.7 (.54)	+0.9 (.76)	+19.8 (.36)	+24 (.65)	+57 (*)	+9.0 (.56)	+61 (.66)	+1.60 (.78)	+1.40 (.81)	+67 (.64)	+0.069 (.61)	+0.45 (.61)	+0.79 (.62)	+5.421 (-)	+5.550 (-)	+5.93 (-)
DAM	+9.5 (.40)	+1.3 (.48)	+65 (.43)	+111 (.44)	+0.5 (.14)	+1.3 (.39)	+20.7 (.19)	+28 (.28)	+61 (-)	+7.0 (.25)	+64 (.36)	+1.60 (.50)	+1.50 (.51)	+87 (.28)	+0.049 (.28)	+0.64 (.25)	+0.39 (.25)	+5.446 (-)	+5.550 (-)	+5.132 (-)

FELTONS SOUNDER 957 {SOD,DLF,HYF,IEF} (P43032992)
EBREFF FOREMOST U208 {DLF,HYF,IEF,MSUDF} (P4289680)
EBREFF GR24 KATE S610 ET (P42622711)
 Sire: EBREFF TFL U208 TESTED X651 ET {DLF,HYF,IEF} (P43091736)
EE SCHUL-LAR N106 OF 009K 434V {DLF,HYF,IEF} (P42444865)
EBREFF P406 MABEL R415 (P42835108)
EE GR24 MABEL N174 {DQD} (P4244199H)
 Animal: JW X651 TESTED 1740 {DLF,HYF,IEF,MSUDF} (P43735530)
SCHU-LAR ON TARGET 225 {SOD,CHB,DLF,HYF,IEF,MSUDF} (P42669011)
HYALITE ON TARGET 936 {CHB,SOD,DLF,HYF,IEF,MSUDF} (P42986803)
HYALITE TS LASS 310 {DLF,HYF,IEF} (P42324845)
 Dam: JW 936 MISS TARGET 1588 ET {DLF,HYF,IEF,MSUDF} (P43553120)
MSU TCF REVOLUTION 4R {SOD,CHB,DLF,HYF,IEF} (P42593680)
KCF MISS REVOLUTION X374 {DLF,HYF,IEF} (P43155725)
BRF MISS FLO U23 {DLF,HYF,IEF} (P42938291)

		INDIVIDUAL PERFORMANCE		PROGENY	
				NUMBER	AVERAGES
Animal	Birth Wt.		81.0 %		
	Weaning Wt.		102.0 %		
	Yearling Wt.		112.0 %		
	Yearling Ht.		5.8 Frame		
	Yr. Sc. Cir.		34.1 Cm.		
	Fat Depth		111.0 %		
	Ribeye Area		94.0 %		
	IMF		119.0 %		
SIRE	Birth Wt.		99.0 %	1149	97.8 %
	Weaning Wt.		105.0 %	966	101.2 %
	Yearling Wt.		103.0 %	712	100.4 %
	Yearling Ht.		4.4 Frame	172	5.1 Frame
	Yr. Sc. Cir.		36.8 Cm.	223	35.3 Cm.
	Fat Depth		118.0 %	477	101.6 %
	Ribeye Area		113.0 %	477	102.2 %
	IMF		90.0 %	476	105.4 %
DAM	Birth Wt.			3	91.7 %
	Weaning Wt.			2	100.0 %
	Yearling Wt.			2	105.5 %
	Yearling Ht.		5.5 Frame	2	5.3 Frame
	Yr. Sc. Cir.			2	34.3 Cm.
	Fat Depth		100.0 %	2	105.5 %
	Ribeye Area		100.0 %	2	93.5 %
	IMF		100.0 %	2	107.0 %



PERFORMANCE AS OF: 07/16/19

SECRETARY, AMERICAN HEREFORD ASSOCIATION

AMERICAN HEREFORD ASSOCIATION

Box 014059, Kansas City, Missouri 64101

PERFORMANCE PEDIGREE

NAME: 6D NEVADA 713 (DLF,HYF,IEF) (P43862246) SEX: Bull HPS: Polled

CALVED: Feb. 08, 2017 TATTOO RE: 713 LE: 713 REGISTRY NUMBER: 43862246

BREEDER: 6D LAND & CATTLE, FALLON NV OWNER: JOE A WAGGONER LLC, CARTHAGE MS
R&R FARMS, SAN JOSE CA
6D LAND & CATTLE, FALLON NV

EPD VALUES	CE EPD	BW EPD	WW EPD	YW EPD	DMI EPD	SC EPD	SCF EPD	HM EPD	MG EPD	MCE EPD	MGW EPD	UDDR EPD	TEAT EPD	CW EPD	FAT EPD	REA EPD	MARB EPD	BMI EPD	PIF EPD	CHD EPD
ANIMAL	+8.8 (.35)	+2.7 (.46)	+63 (.40)	+111 (.41)	+0.3 (.14)	+1.3 (.30)	+20.7 (.10)	+24 (.13)	+55 (-)	+2.7 (.12)	+109 (.26)	+1.30 (.35)	+1.30 (.35)	+103 (.20)	+0.029 (.24)	+1.18 (.20)	+0.28 (.21)	+5.479 (-)	+5.569 (-)	+5.164 (-)
SIRE	+1.2 (.45)	+5.0 (.82)	+69 (.72)	+119 (.71)	+0.2 (.16)	+2.3 (.56)	+20.7 (.20)	+18 (.30)	+52 (-)	-0.7 (.29)	+110 (.41)	+1.40 (.50)	+1.40 (.52)	+82 (.40)	+0.059 (.46)	+0.83 (.39)	+0.44 (.42)	+5.461 (-)	+5.569 (-)	+5.134 (-)
DAM	+13.1 (.34)	+1.2 (.48)	+49 (.42)	+78 (.44)	+0.4 (.14)	+0.4 (.29)	+20.7 (.17)	+29 (.26)	+54 (-)	+4.5 (.20)	+88 (.35)	+1.30 (.47)	+1.40 (.49)	+73 (.20)	+0.005 (.25)	+0.68 (.20)	+0.21 (.21)	+5.418 (-)	+5.452 (-)	+5.110 (-)

MSU TCF REVOLUTION 4R (SOD,CHB,DLF,HYF,IEF) (P42593699)
 KCF BENNETT REVOLUTION X5 (CHB,SOD,DLF,HYF,IEF) (P43081356)
 KCF MISS PROFICIENT U201 (DLF,HYF,IEF,MSUDF) (P42903263)
 Sire: EFREFF RESOLUTE CFO (CHB,DLF,HYF,IEF,MSUDF) (P43591829)
 R&R PRIME CUT 6378 FT (CHB,DLF,HYF,IEF,MSUDF) (P42763264)
 EFREFF 6378 KATE W484 (DLF,HYF,IEF,MSUDF) (P43032139)
 EFREFF GR25 KATE R428 (P42635106)
 Animal: 6D NEVADA 713 (DLF,HYF,IEF) (P43862246)
 HH ADVANCE 3196N (CHB,SOD,DLF,IEF) (42376247)
 GO 3196 ADVANCE S109 (SOD,DLF,HYF,IEF) (42698172)
 GO MS 118 EXCEL N89 (DLF,IEF) (42378636)
 Dam: R&R S109 LEANNE 1206 3016 (DOD,DLF,HYF,IEF) (43418229)
 CBS ABOUT TIME 243 (SOD,DLF,HYF,IEF) (P42797564)
 R&R 743 LEANNE 9006 1206ET (43231400)
 R&R LEANNE 9006 (P42107458)

		INDIVIDUAL PERFORMANCE		PROGENY	
				NUMBER	AVERAGES
Animal	Birth Wt.	94.0 %			
	Weaning Wt.	106.0 %			
	Yearling Wt.	104.0 %			
	Yearling Ht.				
	Yr. Sc. Cir.				
	Fat Depth	112.0 %			
	Ribeye Area	129.0 %			
	IMF	89.0 %			
SIRE	Birth Wt.	109.0 %	314	102.5 %	
	Weaning Wt.	128.0 %	280	101.6 %	
	Yearling Wt.	127.0 %	195	101.1 %	
	Yearling Ht.	5.8 Frame	25	5.0 Frame	
	Yr. Sc. Cir.	41.0 Cm.	35	37.1 Cm.	
	Fat Depth	120.0 %	199	104.3 %	
	Ribeye Area	138.0 %	199	101.8 %	
	IMF	78.0 %	199	103.9 %	
DAM	Birth Wt.	100.0 %	4	105.5 %	
	Weaning Wt.	110.0 %	4	106.8 %	
	Yearling Wt.	113.0 %	3	102.0 %	
	Yearling Ht.				
	Yr. Sc. Cir.				
	Fat Depth	97.0 %	3	102.3 %	
	Ribeye Area	107.0 %	3	110.0 %	
	IMF	86.0 %	3	91.0 %	



PERFORMANCE AS OF: 07/16/19

John A. Waggoner
 SECRETARY AMERICAN HEREFORD ASSOCIATION

AMERICAN HEREFORD ASSOCIATION

Box 014059, Kansas City, Missouri 64101

PERFORMANCE PEDIGREE

NAME: JW B716 DEVOUT 18051 {DLF,HYF,IEF} (P43859659) SEX: Bull HPS: Polled

CALVED: Oct. 13, 2017 TATTOO RE: 18051 LE: 18051 REGISTRY NUMBER: 43859659
BREEDER: JOE A WAGGONER LLC, CARTHAGE MS OWNER: JOE A WAGGONER LLC, CARTHAGE MS

EPO VALUES	CE EPD	BW EPD	WW EPD	YW EPD	DML EPD	SC EPD	SCF EPD	MM EPD	MG EPD	MCE EPD	MCW EPD	UDDR EPD	TEAT EPD	CW EPD	FAT EPD	REA EPD	MARB EPD	BMI EPD	BII EPD	CHB EPD
ANIMAL	+5.7 (.34)	+3.3 (.46)	+70 (.38)	+111 (.39)	+0.7 (.13)	+1.6 (.30)	+19.5 (.11)	+34 (.13)	+69 (-)	+4.9 (.15)	+96 (.27)	+1.40 (.35)	+1.40 (.35)	+84 (.20)	-0.001 (.23)	+0.58 (.19)	+0.36 (.21)	+\$ 426 (-)	+\$ 530 (-)	+\$ 124 (-)
SIRE	+10.5 (.53)	0.0 (.74)	+62 (.60)	+92 (.60)	+0.4 (.18)	+1.5 (.47)	+22.8 (.24)	+37 (.29)	+68 (-)	+4.6 (.32)	+41 (.40)	+1.50 (.50)	+1.70 (.31)	+78 (.31)	+0.029 (.36)	+0.74 (.31)	+0.35 (.32)	+\$ 467 (-)	+\$ 563 (-)	+\$ 116 (-)
DAM	+5.5 (.39)	+2.5 (.46)	+60 (.41)	+95 (.42)	+0.4 (.14)	+1.0 (.35)	+16.3 (.17)	+31 (.26)	+61 (-)	+7.5 (.24)	+117 (.33)	+1.30 (.48)	+1.20 (.48)	+84 (.24)	+0.009 (.26)	+0.42 (.21)	+0.22 (.23)	+\$ 374 (-)	+\$ 457 (-)	+\$ 124 (-)



	INDIVIDUAL PERFORMANCE	PROGENY	
		NUMBER	AVERAGES
Animal Daughters: - Calves: - Ratio: -	Birth Wt.	111.0 %	
	Weaning Wt.	107.0 %	
	Yearling Wt.	105.0 %	
	Yearling Ht.		
	Yr. Sc. Cir.		
	Fat Depth	88.0 %	
	Ribeye Area	102.0 %	
IMF	109.0 %		
SIRE Daughters: 3 Calves: 3 Ratio: 106.7	Birth Wt.		89
	Weaning Wt.		72
	Yearling Wt.		29
	Yearling Ht.	6.1 Frame	19
	Yr. Sc. Cir.	38.5 Cm.	14
	Fat Depth	150.0 %	30
	Ribeye Area	100.0 %	30
IMF	116.0 %	28	
DAM	Birth Wt.		2
	Weaning Wt.		2
	Yearling Wt.		1
	Yearling Ht.		
	Yr. Sc. Cir.		
	Fat Depth	62.0 %	1
	Ribeye Area	103.0 %	1
IMF	92.0 %	1	



PERFORMANCE AS OF: 09/23/19

John A. ...
SECRETARY, AMERICAN HEREFORD ASSOCIATION

AMERICAN HEREFORD ASSOCIATION

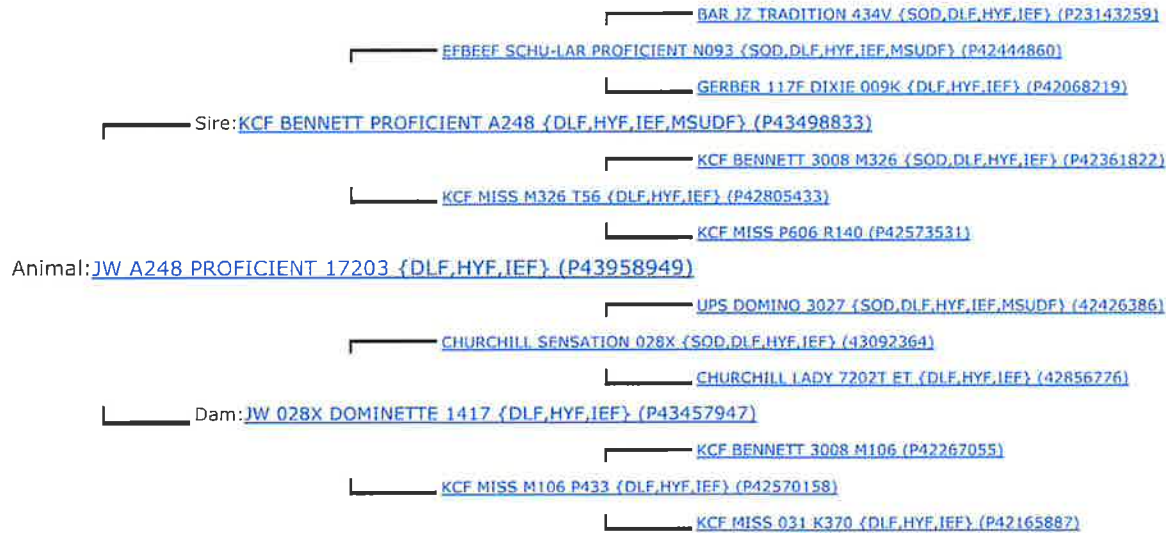
Box 014059, Kansas City, Missouri 64101

PERFORMANCE PEDIGREE

NAME: JW A248 PROFICIENT 17203 {DLF,HYF,IEF} **SEX:** Bull **HPS:** Polled
(P43958949)

CALVED: Feb. 09, 2017 **TATTOO RE:** 17203 **LE:** 17203 **REGISTRY NUMBER:** 43958949
BREEDER: JOE A WAGGONER LLC, CARTHAGE MS **OWNER:** JOE A WAGGONER LLC, CARTHAGE MS

EPD VALUES	CE EPD	BW EPD	WW EPD	YW EPD	DMI EPD	SC EPD	SCF EPD	MM EPD	MG EPD	MCE EPD	MCW EPD	UDDR EPD	TEAT EPD	CW EPD	FAT EPD	REA EPD	MARB EPD	BMI EPD	BII EPD	CHB EPD
ANIMAL	+10.0 (.35)	+0.5 (.43)	+59 (.36)	+88 (.37)	+0.2 (.12)	+1.1 (.29)	+22.0 (.11)	+34 (.13)	+63 (-)	+5.9 (.12)	+99 (.27)	+1.40 (.36)	+1.70 (.35)	+70 (.10)	+0.069 (.10)	+0.35 (.10)	+0.28 (.10)	+\$ 442 (-)	+\$ 534 (-)	+\$ 101 (-)
SIRE	+3.8 (.42)	+1.6 (.62)	+55 (.53)	+80 (.53)	+0.2 (.17)	+0.7 (.42)	+22.6 (.20)	+29 (.25)	+56 (-)	+2.4 (.25)	+85 (.38)	+1.30 (.47)	+1.40 (.46)	+72 (.31)	+0.049 (.35)	+0.56 (.30)	+0.23 (.33)	+\$ 452 (-)	+\$ 535 (-)	+\$ 104 (-)
DAM	+11.8 (.32)	-0.3 (.50)	+52 (.44)	+81 (.45)	+0.3 (.15)	+2.1 (.37)	+21.3 (.20)	+39 (.26)	+65 (-)	+7.3 (.20)	+48 (.36)	+1.50 (.46)	+1.60 (.46)	+64 (.26)	+0.039 (.29)	+0.24 (.25)	+0.39 (.26)	+\$ 424 (-)	+\$ 515 (-)	+\$ 96 (-)



		INDIVIDUAL PERFORMANCE		PROGENY	
				NUMBER	AVERAGES
Animal	Birth Wt.		94.0 %		
	Weaning Wt.				
	Yearling Wt.				
	Yearling Ht.				
	Yr. Sc. Cir.				
	Fat Depth				
	Ribeye Area				
	IMF				
SIRE	Birth Wt.			35	97.3 %
	Weaning Wt.			29	100.4 %
	Yearling Wt.			18	99.9 %
	Yearling Ht.	6.1 Frame		13	5.5 Frame
	Yr. Sc. Cir.	33.5 Cm.		5	30.6 Cm.
	Fat Depth	148.0 %		14	101.2 %
	Ribeye Area	111.0 %		14	104.4 %
	IMF	140.0 %		14	97.9 %
DAM	Birth Wt.	108.0 %		3	96.7 %
	Weaning Wt.	111.0 %		2	101.5 %
	Yearling Wt.	105.0 %			
	Yearling Ht.	6.2 Frame			
	Yr. Sc. Cir.				
	Fat Depth	92.0 %			
	Ribeye Area	88.0 %			
	IMF	104.0 %			



PERFORMANCE AS OF: 09/23/19

SECRETARY, AMERICAN HEREFORD ASSOCIATION